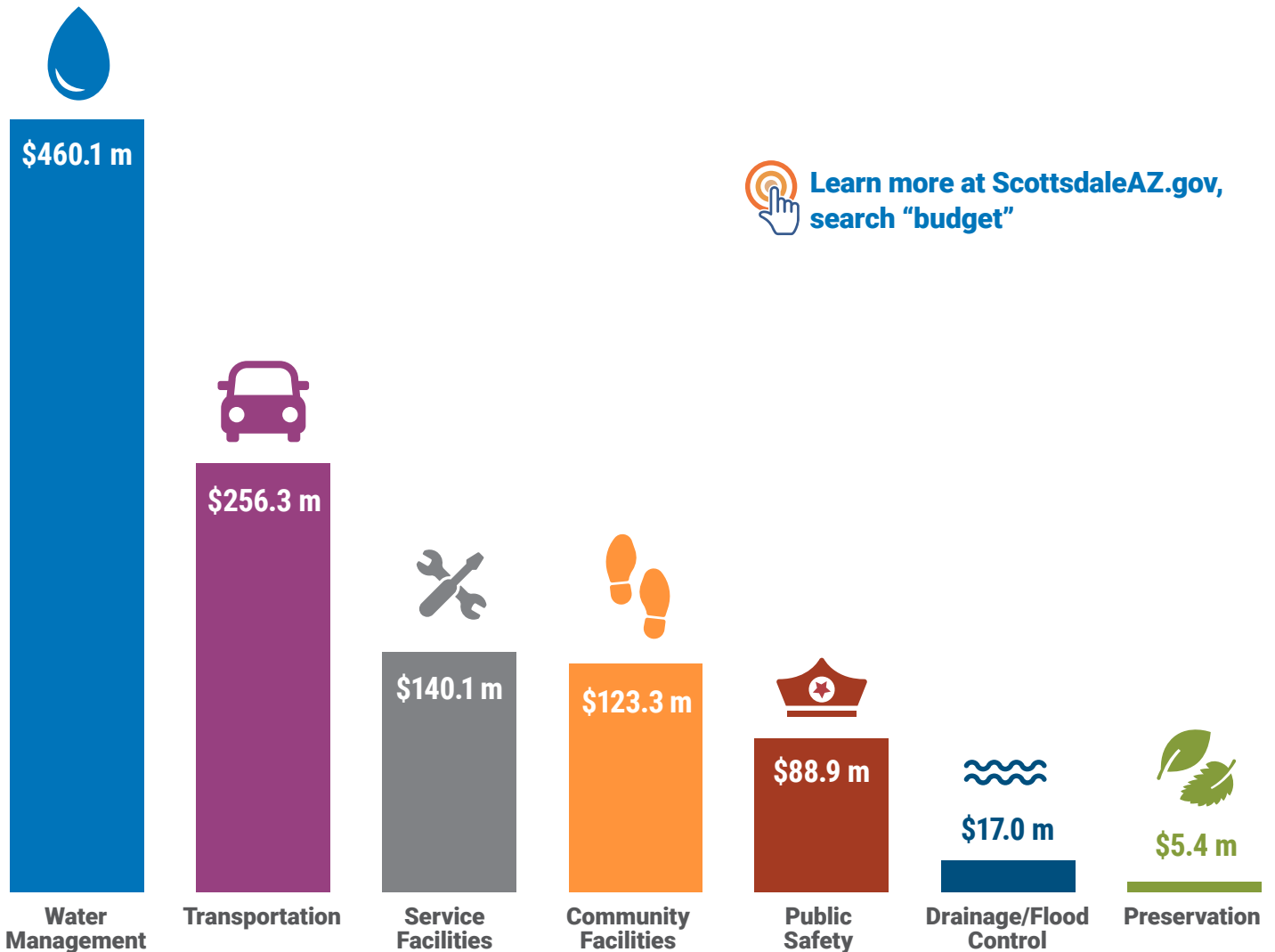




The Capital Improvement Plan (CIP) consists of the projects the city needs to build, repair, expand or maintain to serve the community. A five-year CIP is developed and updated annually, including budgeted funding sources. \$1.1 billion has been adopted in the FY 2024/25 CIP budget, which is a 22 percent decrease from the prior year’s budget of \$1.4 billion. These projects address City Council priorities and critical capital infrastructure needs in a variety of areas and are supported by different funding sources, including many directly funded by the city’s voters-approved general obligation bonds.

A few notable capital improvement projects completed during FY 2023/24 and planned for the upcoming FY 2024/25 are highlighted on the following pages.

**FY 2024/25 Adopted Capital Improvement Plan  
\$1.1 Billion Budgeted Program Expenditures**



 [Learn more at ScottsdaleAZ.gov,](https://www.scottsdaleAZ.gov)  
search "budget"

Includes contingencies



## Water Management

Water Management projects ensure delivery of safe, reliable water and water reclamation services.



Scottsdale Princess Metering Station

### Highlighted Accomplishments

The Princess Metering Station is a critical component of the sewer collection system. This station measures both the flow and the quality of the water as it leaves Scottsdale and enters the Sub-Regional Operating Group (SROG) system. The project involved replacing large diameter pipes, manholes, and monitoring equipment. A massive temporary sewer bypass system had to be used for over a year to facilitate the construction. The City of Scottsdale now has a reliable metering station with an expected life of 100 years.

### Looking Forward

Construction of a new 36-inch diameter sewer line is underway to serve new development in the Scottsdale Airport Area. This gravity sewer line will facilitate build-out development flows while at the same time providing a valuable water resource which will be pumped back to the water campus for treatment and recycled use. This supports the city sustainability and water resources management goals.



## Transportation

Transportation projects provide safe, efficient and affordable mobility options via streets, roads, paths, traffic signals and traffic management technology.

### Highlighted Accomplishments

#### Raintree Extension & Raintree-Hayden Roundabout

Scottsdale has finished expanding and extending Raintree Drive west of Hayden Road, which included the installation of a roundabout. Roundabouts enhance road safety by lowering intersection speeds, reducing lanes of traffic crossed for pedestrians and preventing more dangerous (head-on) collisions through the angle at which vehicles make contact.



Raintree-Hayden Roundabout

### Looking Forward

#### Arizona State Route 101 Freeway Widening

In a partnership with the Arizona Department of Transportation (ADOT), Scottsdale will upgrade four interchanges along the Loop 101 by adding more lanes for vehicles to travel on, increasing the freeway’s capacity for traffic. With increased capacity, the freeway can handle more vehicles per hour, leading to smoother traffic flow, fewer delays, and improved overall efficiency of the transportation network.

#### Chaparral Road Underpass

Scottsdale will finalize a dedicated crossing for bicycles and pedestrians along the Indian Bend Wash Multi-use Path, located on the eastern side of Hayden and Chaparral Roads. Pedestrian underpasses allow street crossing without disrupting the flow of traffic and avoiding the risk of vehicles colliding with wayfarers. Overall, these channels play a crucial role in safety and connectivity in communities.



## Service Facilities

Service Facilities provide buildings and technology for efficient and effective city operations.

### Highlighted Accomplishments

The design phase has commenced for two solar projects under the Bond 2019 program at the Civic Center campus. These initiatives aim to boost solar power generation and lower energy expenses at the campus. Enhancing energy efficiency in public facilities and expanding the use of renewable energy align with objectives outlined in the current General Plan.



Scottsdale Solid Waste Recycling Vehicle

### Looking Forward

The expansion project for the Solid Waste Transfer Station is scheduled to begin construction in 2025 to improve efficiency and capacity of the city’s waste management system. This project will double the facility’s size and introduce new drop-off points, with a hazardous waste facility for residents and a green waste site for commercial businesses.



## Community Facilities

Community Facilities help the city deliver services via recreation facilities, parks, paths, aquatic centers, libraries and senior centers.



Reata Sports Complex

### Highlighted Accomplishments

As part of the Bond 2019 program, the city completed the Reata Sports Complex against the McDowell Mountains. It features five premier sand-based sports fields with LED lighting, walking paths, restrooms, and a large, shaded pavilion overlooking the fields.

### Looking Forward

The Ashler Hills Neighborhood Park will complete construction. The highly anticipated park will provide North Scottsdale with a variety of amenities including eight pickleball courts, a basketball court, a shaded playground, walking paths and open turf areas.

Meanwhile, McCormick-Stillman Railroad Park is undergoing enhancements, including a new indoor play facility themed around railroads and a summer-ready splash pad.



## Public Safety

Public Safety projects help keep Scottsdale safe via modern fire and police stations, training facilities and automation systems related to fire and police operations.

### Highlighted Accomplishments

The city completed renovations to police facilities, such as the 911 Communications Center and the Real Time Crime Center, with new workstations for current technology and increased security measures for reception areas. These renovated spaces provide the infrastructure to utilize the most current technology and keep the public and employees safe.

### Looking Forward

Construction projects at Fire Station 612 and the Thomas A. Hontz Police and Fire Training Facility will be completed by 2025, providing Scottsdale residents with enhanced police and fire safety services.

## Drainage / Flood Control

Drainage / Flood Control projects prevent property damage from flooding with detention basins, channel projects and a program of neighborhood drainage improvements.

### Highlighted Accomplishment

#### Rawhide Wash Flood Hazard Mitigation Project

The Rawhide Wash Flood Hazard Mitigation Project commenced in collaboration with the City of Phoenix and the Maricopa County Flood Control District. Phase I has concluded, and Phase II is scheduled for completion by Fall 2024. This initiative incorporates a floodwall and protective system designed to withstand a 100-year flood event, minimizing flood hazards for residents of Scottsdale.



### Looking Forward

#### Reata Wash Channel Improvement Project

Scottsdale is actively enhancing the stormwater infrastructure along the Reata Wash, which is located in the northeastern part of the city. These enhancements will provide increased flood protection for homes in Scottsdale and eliminate the need to regulate areas currently vulnerable to damage from a 100-year flood event.

#### Granite Reef Wash Project

Scottsdale, along with the Maricopa County Flood Control District and the Salt River Pima-Maricopa Indian Community, is undertaking storm drain enhancements within the Granite Reef Wash watershed (in the eastern part of the city). Upon completion, these enhancements will redirect stormwater westward to Indian Bend Wash. Consequently, the 100-year floodplain for the Granite Reef Wash watershed is expected to be smaller than indicated on the Federal Emergency Management Agency's (FEMA's) current Flood Insurance Rate Maps (FIRMs). Phase I of these enhancements has been finalized and the city is currently progressing with the final design and construction of Phase II improvements.



## Preservation

Preservation Programs focus on preserving the character and environment of Scottsdale with an emphasis on maintaining open space such as Scottsdale's McDowell Sonoran Preserve.



### Highlighted Accomplishments

The city completed a variety of projects, including those that improved visitor experience and safety, reduced the threat of wildfires and protected the natural and cultural resources of the McDowell Sonoran Preserve.

### Looking Forward

In the Scottsdale's McDowell Sonoran Preserve, staff will continue to remove unwanted trails and roads, invasive plants and wildland fire fuels. The city will also complete the update to the Preserve's Ecological Resource Plan, finish construction of the Brown's Ranch Interpretive Trail and nominate the Brown's Ranch site to the National Register of Historic Places.