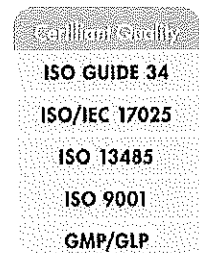


Scottsdale Police Department Crime Laboratory

**Calibrator and Control
Certificates for Samples Run
09/03/15 -**

Certificate of Analysis
Certified Reference Standard - NIST Traceable
Ethanol-20
Ethyl Alcohol



Catalog Number: E-056
Solution Lot: FN09031301
Expiration Date: September 2018
Diluent: Water
Volume per Ampoule: 1.2 mL
Storage: Refrigerate. Do not freeze.
Intended Use: For R&D/ analytical purposes only. Not suitable for human or animal consumption.

- Expiration Date has been established through real time stability studies and applies to the ampoule stored unopened at the recommended storage condition.
- Ampoules are overfilled to ensure a minimum 1.2 mL volume fill. We advise laboratories to use measured volumes of this standard solution before diluting to the desired concentration. The standard should be used immediately after opening to avoid concentration changes due to evaporation.

Component	Solution Chromatographic Purity	Certified Concentration
Ethanol	100%	20.00 ± 0.07 mg/dL
<ul style="list-style-type: none"> ▪ Uncertainty of the concentration, expressed in terms of volume, is an expanded uncertainty in accordance with ISO 17025 and ISO Guide 34 at the 95% confidence interval using a coverage factor of k=2 and has been calculated by statistical analysis of our production methods applicable to ethanol reference standards and incorporates uncertainty of the purity factor, material density and mass measurement. The dispensing process is sufficiently controlled as to not be a significant contributor to uncertainty calculations and is, therefore, excluded. Solution stability is established through real time stability studies and is, therefore, excluded. ▪ When expressed in percentage terms, the relative standard uncertainty of the concentration is 0.175% and the relative expanded uncertainty is 0.35% at the 95% confidence interval (k=2). ▪ The purity factor (PF) mass balance measurement equation is used to calculate the amount of ethanol required to achieve an accurate concentration of the solution standard, accounting for both purity and residual water content. ▪ Purity factor has been established through independent certification of the neat analyte to ISO 17025 standards – See page 2. ▪ Solution purity is verified post ampouling and demonstrates no contamination or degradation has occurred. 		

Traceability to SI through NIST:

- This standard has been prepared and certified under the ISO Guide 34 and ISO/IEC 17025 standards and meets the requirements of a Certified Reference Material as defined by ISO.
- Gravimetrically prepared using qualified balances calibrated semi-annually by Mettler Toledo to ISO 17025 requirements and using NIST traceable weights. Qualification of each balance includes the assignment of a minimum weighing by Mettler Toledo taking into consideration the balance and installed environmental conditions to ensure each weighing complies with USP tolerances of NMT 0.1% relative uncertainty.
- Balance calibration adjustments are performed weekly utilizing the balance's internal adjustment mechanism and with NIST traceable weights.
- Balance calibration is verified prior to each use and is performed utilizing NIST traceable weights. Weigh tapes from the balance calibration are included in the production batch record for this standard. Production data package available upon request.
- Fill volume is gravimetrically verified throughout the dispensing process using qualified balances calibrated with NIST traceable weights.
- Weight sets used for all balance calibrations are calibrated externally by an ISO 17025 accredited calibration laboratory to NIST standards.
- Concentration of this standard has been analytically verified against a NIST SRM and a Control using a validated method. See page 2.

Cerilliant certifies that this standard meets the specifications stated in this certificate and warrants this product to meet the stated acceptance criteria through the expiration date. Warranty applies to ampoules stored unopened and stored under the recommended storage conditions. Warranty and expiry do not extend to solutions into which this product has been incorporated. Establishment of shelf life of all such products is the responsibility of the user.



Darron Ellsworth, Quality Assurance Manager

February 13, 2009

Date

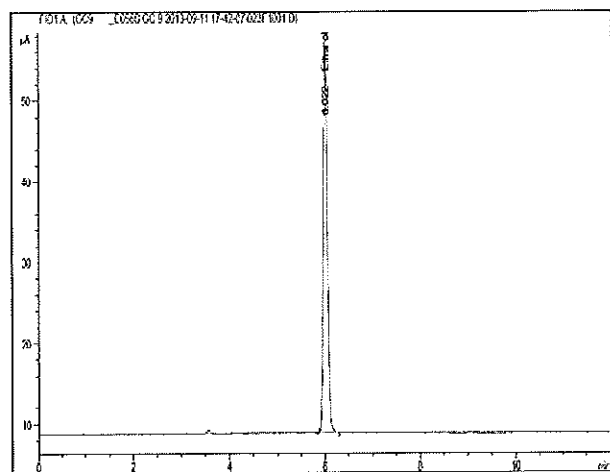
Analytical Verification of Solution Standard Concentration and Batch Homogeneity:

Solution Standard	Lot Number	Results compared to NIST SRM Lot 2891 (mg/dL)	Homogeneity (ampoule to ampoule consistency) %RSD
New Lot	FN09031301	20.02	0.66%
Prior Lot	FN092710-01	19.89	0.90%
Acceptance Criteria		±2%	≤2%

- Concentration is calculated as the average of multiple analyses conducted using a validated Headspace GC/FID method. The validated GC/HS method has been demonstrated to adequately detect and quantitate ethanol concentrations ranging from 5 to 600 mg/dL. Relative standard uncertainty of the analysis is 1.675% and includes both uncertainty of the analytical method and uncertainty of the NIST SRM concentration.
- The Control is independently prepared from a different lot of neat ethanol to ensure no bias in the analysis and independently qualified against a NIST SRM.
- Homogeneity is ensured through rigorous production process controls statistically analyzed to evaluate risk and verified by analysis. The %RSD of samples pulled from across the lot using a stratified random sampling plan demonstrates ampoule to ampoule consistency or homogeneity of the New Lot.
- The %RSD of the Prior Lot represents system suitability on the date of analysis. Triplicate injections of the Prior Lot are bracketed at the beginning and end of the sequence. %RSD criteria ensures proper system performance throughout the sequence.
- All instruments used for certification of the neat materials and verification of the solution concentration and homogeneity are fully qualified through an Installation Qualification and an Operational Qualification which is repeated annually. System suitability is performed daily with rigorous acceptance criteria to ensure the system continues to perform within the validated parameters.

Solution Standard Assay Parameters

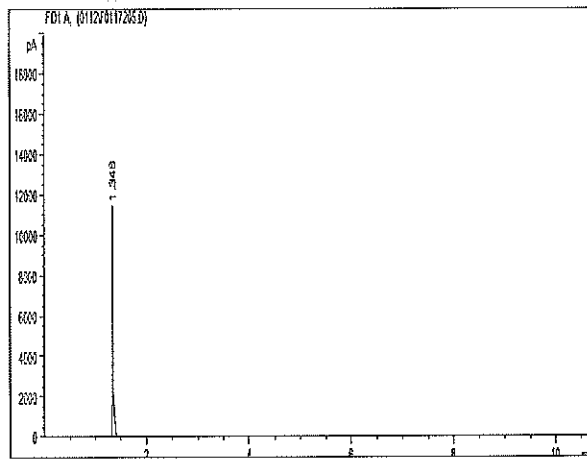
Analysis Method: GC/FID Headspace
 Column: DB-ALC1 30 m x 0.53 mm ID, 3.0 µm film thickness
 Temp Program: 40°C hold for 12 min
 Injector Temp: 200°C
 Detector Temp: 250°C



Neat Material Analysis

Purity by GC/FID Analysis: 100.0%
 Water Content by Karl Fischer: 0.1%
 Purity Factor: 99.9%

The purity factor (PF) mass balance measurement equation is used to calculate the amount of ethanol required to achieve an accurate concentration of the solution standard, accounting for both purity and residual water content.



Certificate of Analysis
Certified Reference Standard - NIST Traceable
Ethanol-100
Ethyl Alcohol

Catalog Number: E-031
Solution Lot: FN02021403
Expiration Date: March 2019
Diluent: Water
Volume per Ampoule: 1.2 mL
Storage: Refrigerate. Do not freeze.
Intended Use: For R&D/ analytical purposes only. Not suitable for human or animal consumption.

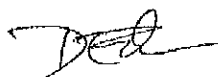
- Expiration Date has been established through real time stability studies and applies to the ampoules stored unopened at the recommended storage condition.
- Ampoules are overfilled to ensure a minimum 1.2 mL volume fill. We advise laboratories to use measured volumes of this standard solution before diluting to the desired concentration. The standard should be used immediately after opening to avoid concentration changes due to evaporation.

Component	Solution Chromatographic Purity	Certified Concentration
Ethanol	>99.9%	100.0 ± 0.4 mg/dL
<ul style="list-style-type: none"> ▪ Uncertainty of the concentration, expressed in terms of volume, is an expanded uncertainty in accordance with ISO 17025 and ISO Guide 34 at the 95% confidence interval using a coverage factor of k=2 and has been calculated by statistical analysis of our production methods applicable to ethanol reference standards and incorporates uncertainty of the purity factor, material density and mass measurement. The dispensing process is sufficiently controlled as to not be a significant contributor to uncertainty calculations and is, therefore, excluded. Solution stability is established through real time stability studies and is, therefore, excluded. ▪ When expressed in percentage terms, the relative standard uncertainty of the concentration is 0.175% and the relative expanded uncertainty is 0.35% at the 95% confidence interval (k=2). ▪ The purity factor (PF) mass balance measurement equation is used to calculate the amount of ethanol required to achieve an accurate concentration of the solution standard, accounting for both purity and residual water content. ▪ Purity factor has been established through independent certification of the neat analyte to ISO 172025 standards – See page 2. ▪ Solution purity is verified post ampouling and demonstrates no contamination or degradation has occurred. 		

Traceability to SI through NIST:

- This standard has been prepared and certified under the ISO Guide 34 and ISO/IEC 17025 standards and meets the requirements of a Certified Reference Material as defined by ISO.
- Gravimetrically prepared using qualified balances calibrated semi-annually by Mettler Toledo to ISO 17025 requirements and using NIST traceable weights. Qualification of each balance includes the assignment of a minimum weighing by Mettler Toledo taking into consideration the balance and installed environmental conditions to ensure each weighing complies with USP tolerances of NMT 0.1% relative uncertainty.
- Balance calibration adjustments are performed weekly utilizing the balance's internal adjustment mechanism and with NIST traceable weights.
- Balance calibration is verified prior to each use and is performed utilizing NIST traceable weights. Weigh tapes from the balance calibration are included in the production batch record for this standard. Production data package available upon request.
- Fill volume is gravimetrically verified throughout the dispensing process using qualified balances calibrated with NIST traceable weights.
- Weight sets used for all balance calibrations are calibrated externally by an ISO 17025 accredited calibration laboratory to NIST standards.
- Concentration of this standard has been analytically verified against a NIST SRM and a Control using a validated method. See page 2.

Cerilliant certifies that this standard meets the specifications stated in this certificate and warrants this product to meet the stated acceptance criteria through the expiration date. Warranty applies to ampoules stored unopened and stored under the recommended storage conditions. Warranty and expiry do not extend to solutions into which this product has been incorporated. Establishment of shelf life of all such products is the responsibility of the user.

Darron Ellsworth, Quality Assurance Manager

July 02, 2014
Date

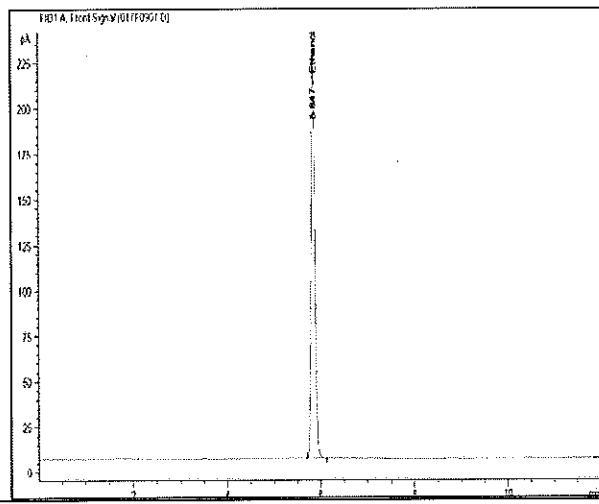
Analytical Verification of Solution Standard Concentration and Batch Homogeneity:

Solution Standard	Lot Number	Results compared to NIST SRM Lot 2894 (mg/dL)	Homogeneity (ampoule to ampoule consistency) %RSD
New Lot	FN02021403	99.34	0.80%
Prior Lot	FN050312-01	99.13	1.08%
Acceptance Criteria		±2%	±2%

- Concentration is calculated as the average of multiple analyses conducted using a validated Headspace GC/FID method. The validated GC/HS method has been demonstrated to adequately detect and quantitate ethanol concentrations ranging from 5 to 600 mg/dL. Relative standard uncertainty of the analysis is 1.675% and includes both uncertainty of the analytical method and uncertainty of the NIST SRM concentration.
- The Control is independently prepared from a different lot of neat ethanol to ensure no bias in the analysis and independently qualified against a NIST SRM.
- Homogeneity is ensured through rigorous production process controls statistically analyzed to evaluate risk and verified by analysis. The %RSD of samples pulled from across the lot using a stratified random sampling plan demonstrates ampoule to ampoule consistency or homogeneity of the New Lot.
- The %RSD of the Prior Lot represents system suitability on the date of analysis. Triplicate injections of the Prior Lot are bracketed at the beginning and end of the sequence. %RSD criteria ensures proper system performance throughout the sequence.
- All instruments used for certification of the neat materials and verification of the solution concentration and homogeneity are fully qualified through an Installation Qualification and an Operational Qualification which is repeated annually. System suitability is performed daily with rigorous acceptance criteria to ensure the system continues to perform within the validated parameters.

Solution Standard Assay Parameters

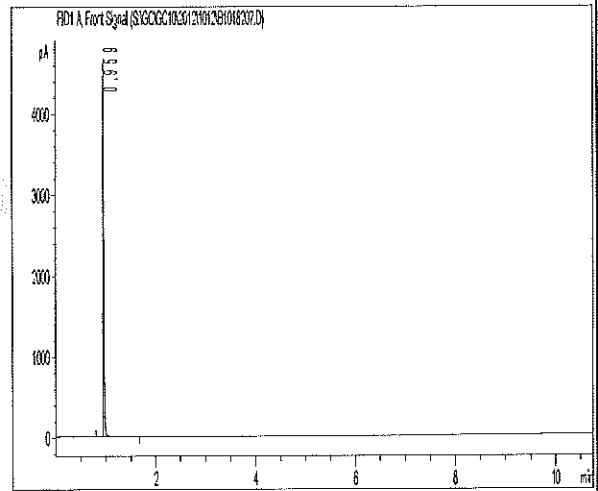
Analysis Method: GC/FID Headspace
 Column: DB-ALC1 30 m x 0.53 mm ID, 3.0 µm film thickness
 Temp Program: 40°C hold for 12 min
 Injector Temp: 200°C
 Detector Temp: 250°C



Neat Material Analysis

Purity by GC/FID Analysis: >99.9%
 Water Content by Karl Fischer: 0.09%
 Purity Factor: 99.91%

The purity factor (PF) mass balance measurement equation is used to calculate the amount of ethanol required to achieve an accurate concentration of the solution standard, accounting for both purity and residual water content.



COA Revision History

Revision No.	Date	Reason for Revision
00	June 03, 2014	Initial Version
01	July 02, 2014	Removed "Results Compared to Control" data. Corrected Karl Fischer and Purity Factor data. Added Revision History.

Certificate of Analysis
Certified Reference Standard - NIST Traceable
Ethanol-200
Ethyl Alcohol

Cerilliant Quality
ISO GUIDE 34
ISO/IEC 17025
ISO 13485
ISO 9001
GMP/GLP

Catalog Number: E-032
Solution Lot: FN032712-01
Expiration Date: March 2017
Diluent: Water
Volume per Ampoule: 1.2 mL
Storage: Refrigerate. Do not freeze.
Intended Use: For R&D/ analytical purposes only. Not suitable for human or animal consumption.

- Expiration Date has been established through real time stability studies and applies to the ampoule stored unopened at the recommended storage condition.
- Ampoules are overfilled to ensure a minimum 1.2 mL volume fill. We advise laboratories to use measured volumes of this standard solution before diluting to the desired concentration. The standard should be used immediately after opening to avoid concentration changes due to evaporation.

Component	Solution Chromatographic Purity	Certified Concentration
Ethanol	100%	200.0 ± 0.7 mg/dL
<ul style="list-style-type: none"> ▪ Uncertainty of the concentration, expressed in terms of volume, is an expanded uncertainty in accordance with ISO 17025 and ISO Guide 34 at the 95% confidence interval using a coverage factor of k=2 and has been calculated by statistical analysis of our production methods applicable to ethanol reference standards and incorporates uncertainty of the purity factor, material density and mass measurement. The dispensing process is sufficiently controlled as to not be a significant contributor to uncertainty calculations and is, therefore, excluded. Solution stability is established through real time stability studies and is, therefore, excluded. ▪ When expressed in percentage terms, the relative standard uncertainty of the concentration is 0.175% and the relative expanded uncertainty is 0.35% at the 95% confidence interval (k=2). ▪ The purity factor (PF) mass balance measurement equation is used to calculate the amount of ethanol required to achieve an accurate concentration of the solution standard, accounting for both purity and residual water content. ▪ Purity factor has been established through independent certification of the neat analyte to ISO 172025 standards – See page 2. ▪ Solution purity is verified post ampouling and demonstrates no contamination or degradation has occurred. 		

Traceability to SI through NIST:

- This standard has been prepared and certified under the ISO Guide 34 and ISO/IEC 17025 standards and meets the requirements of a Certified Reference Material as defined by ISO.
- Gravimetrically prepared using qualified balances calibrated semi-annually by Mettler Toledo to ISO 17025 requirements and using NIST traceable weights. Qualification of each balance includes the assignment of a minimum weighing by Mettler Toledo taking into consideration the balance and installed environmental conditions to ensure each weighing complies with USP tolerances of NMT 0.1% relative uncertainty.
- Balance calibration adjustments are performed weekly utilizing the balance's internal adjustment mechanism and with NIST traceable weights.
- Balance calibration is verified prior to each use and is performed utilizing NIST traceable weights. Weigh tapes from the balance calibration are included in the production batch record for this standard. Production data package available upon request.
- Fill volume is gravimetrically verified throughout the dispensing process using qualified balances calibrated with NIST traceable weights.
- Weight sets used for all balance calibrations are calibrated externally by an ISO 17025 accredited calibration laboratory to NIST standards.
- Concentration of this standard has been analytically verified against a NIST SRM and a Control using a validated method. See page 2.

Cerilliant certifies that this standard meets the specifications stated in this certificate and warrants this product to meet the stated acceptance criteria through the expiration date. Warranty applies to ampoules stored unopened and stored under the recommended storage conditions. Warranty and expiry do not extend to solutions into which this product has been incorporated. Establishment of shelf life of all such products is the responsibility of the user.



Lara Sparks

Lara Sparks, Quality Assurance Director

May 6, 2012

Date

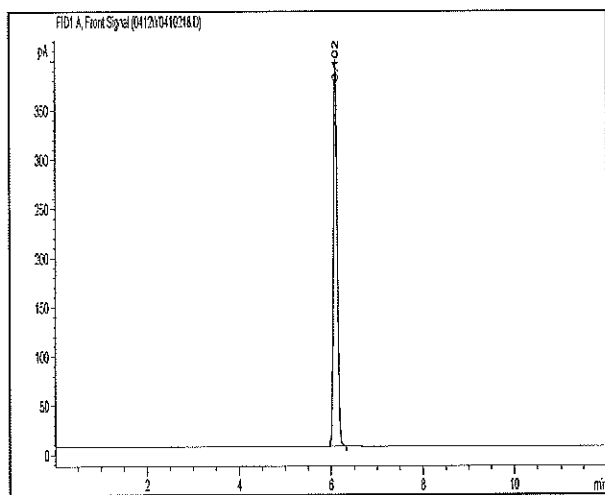
Analytical Verification of Solution Standard Concentration and Batch Homogeneity:

Solution Standard	Lot Number	Results compared to NIST SRM Lot 2895 (mg/dL)	Results compared to Control (% Difference)	Homogeneity (ampoule to ampoule consistency) %RSD
New Lot	FN032712-01	200.3	0.14%	0.70%
Prior Lot	FN070209-01	199.0	0.76%	0.50%
Acceptance Criteria		±2%	±2%	≤2%

- Concentration is calculated as the average of multiple analyses conducted using a validated Headspace GC/FID method. The validated GC/HS method has been demonstrated to adequately detect and quantitate ethanol concentrations ranging from 5 to 600 mg/dL. Relative standard uncertainty of the analysis is 1.675% and includes both uncertainty of the analytical method and uncertainty of the NIST SRM concentration.
- The Control is independently prepared from a different lot of neat ethanol to ensure no bias in the analysis and independently qualified against a NIST SRM.
- Homogeneity is ensured through rigorous production process controls statistically analyzed to evaluate risk and verified by analysis. The %RSD of samples pulled from across the lot using a stratified random sampling plan demonstrates ampoule to ampoule consistency or homogeneity of the New Lot.
- The %RSD of the Prior Lot represents system suitability on the date of analysis. Triplicate injections of the Prior Lot are bracketed at the beginning and end of the sequence. %RSD criteria ensures proper system performance throughout the sequence.
- All instruments used for certification of the neat materials and verification of the solution concentration and homogeneity are fully qualified through an Installation Qualification and an Operational Qualification which is repeated annually. System suitability is performed daily with rigorous acceptance criteria to ensure the system continues to perform within the validated parameters.

Solution Standard Assay Parameters

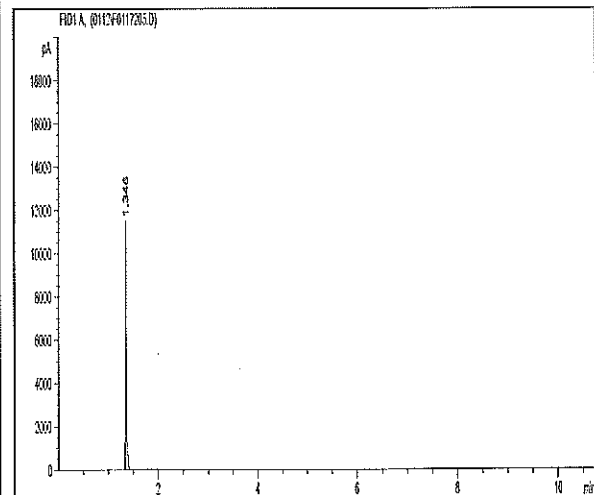
Analysis Method: GC/FID Headspace
Column: DB-ALC1 30 m x 0.53 mm ID, 3.0 µm film thickness
Temp Program: 40°C hold for 12 min
Injector Temp: 200°C
Detector Temp: 250°C



Neat Material Analysis

Purity by GC/FID Analysis: 100.0%
Water Content by Karl Fischer: 0.10%
Purity Factor: 99.90%

The purity factor (PF) mass balance measurement equation is used to calculate the amount of ethanol required to achieve an accurate concentration of the solution standard, accounting for both purity and residual water content.



Certificate of Analysis
Certified Reference Standard - NIST Traceable
Ethanol-400
Ethyl Alcohol

Certified to comply with:
ISO GUIDE 34
ISO/IEC 17025
ISO 13485
ISO 9001
GMP/GLP

Catalog Number: E-036
Solution Lot: FN012712-01
Expiration Date: January 2017
Diluent: Water
Volume per Ampoule: 1.2 mL
Storage: Refrigerate. Do not freeze.
Intended Use: For R&D/ analytical purposes only. Not suitable for human or animal consumption.

- Expiration Date has been established through real time stability studies and applies to the ampoule stored unopened at the recommended storage condition.
- Ampoules are overfilled to ensure a minimum 1.2 mL volume fill. We advise laboratories to use measured volumes of this standard solution before diluting to the desired concentration. The standard should be used immediately after opening to avoid concentration changes due to evaporation.

Component	Solution Chromatographic Purity	Certified Concentration
Ethanol	100%	400.0 ± 1.4 mg/dL
<ul style="list-style-type: none"> ▪ Uncertainty of the concentration, expressed in terms of volume, is an expanded uncertainty in accordance with ISO 17025 and ISO Guide 34 at the 95% confidence interval using a coverage factor of k=2 and has been calculated by statistical analysis of our production methods applicable to ethanol reference standards and incorporates uncertainty of the purity factor, material density and mass measurement. The dispensing process is sufficiently controlled as to not be a significant contributor to uncertainty calculations and is, therefore, excluded. Solution stability is established through real time stability studies and is, therefore, excluded. ▪ When expressed in percentage terms, the relative standard uncertainty of the concentration is 0.175% and the relative expanded uncertainty is 0.35% at the 95% confidence interval (k=2). ▪ The purity factor (PF) mass balance measurement equation is used to calculate the amount of ethanol required to achieve an accurate concentration of the solution standard, accounting for both purity and residual water content. ▪ Purity factor has been established through independent certification of the neat analyte to ISO 172025 standards – See page 2. ▪ Solution purity is verified post ampouling and demonstrates no contamination or degradation has occurred. 		

Traceability to SI through NIST:

- This standard has been prepared and certified under the ISO Guide 34 and ISO/IEC 17025 standards and meets the requirements of a Certified Reference Material as defined by ISO.
- Gravimetrically prepared using qualified balances calibrated semi-annually by Mettler Toledo to ISO 17025 requirements and using NIST traceable weights. Qualification of each balance includes the assignment of a minimum weighing by Mettler Toledo taking into consideration the balance and installed environmental conditions to ensure each weighing complies with USP tolerances of NMT 0.1% relative uncertainty.
- Balance calibration adjustments are performed weekly utilizing the balance's internal adjustment mechanism and with NIST traceable weights.
- Balance calibration is verified prior to each use and is performed utilizing NIST traceable weights. Weigh tapes from the balance calibration are included in the production batch record for this standard. Production data package available upon request.
- Fill volume is gravimetrically verified throughout the dispensing process using qualified balances calibrated with NIST traceable weights.
- Weight sets used for all balance calibrations are calibrated externally by an ISO 17025 accredited calibration laboratory to NIST standards.
- Concentration of this standard has been analytically verified against a NIST SRM and a Control using a validated method. See page 2.

Cerilliant certifies that this standard meets the specifications stated in this certificate and warrants this product to meet the stated acceptance criteria through the expiration date. Warranty applies to ampoules stored unopened and stored under the recommended storage conditions. Warranty and expiry do not extend to solutions into which this product has been incorporated. Establishment of shelf life of all such products is the responsibility of the user.



Lara Sparks

Lara Sparks, Quality Assurance Director

February 20, 2012

Date

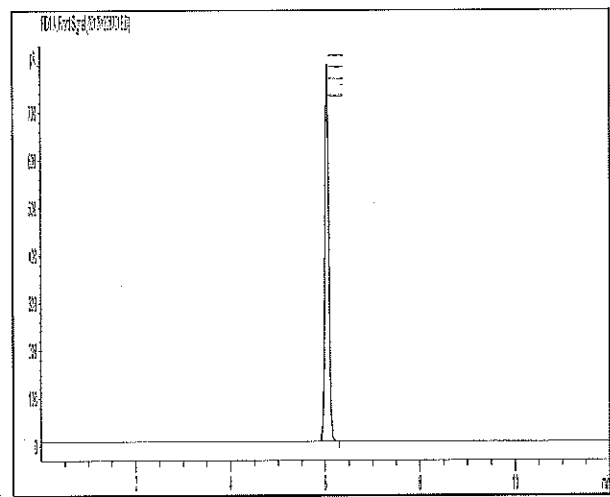
Analytical Verification of Solution Standard Concentration and Batch Homogeneity:

Solution Standard	Lot Number	Results compared to NIST SRM Lot 2896 (mg/dL)	Results compared to Control (% Difference)	Homogeneity (ampoule to ampoule consistency) %RSD
New Lot	FN012712-01	399.9	0.19%	0.72%
Prior Lot	FN040909-01	397.6	0.39%	1.09%
Acceptance Criteria		±2%	±2%	≤2%

- Concentration is calculated as the average of multiple analyses conducted using a validated Headspace GC/FID method. The validated GC/HS method has been demonstrated to adequately detect and quantitate ethanol concentrations ranging from 5 to 600 mg/dL. Relative standard uncertainty of the analysis is 1.675% and includes both uncertainty of the analytical method and uncertainty of the NIST SRM concentration.
- The Control is independently prepared from a different lot of neat ethanol to ensure no bias in the analysis and independently qualified against a NIST SRM.
- Homogeneity is ensured through rigorous production process controls statistically analyzed to evaluate risk and verified by analysis. The %RSD of samples pulled from across the lot using a stratified random sampling plan demonstrates ampoule to ampoule consistency or homogeneity of the New Lot.
- The %RSD of the Prior Lot represents system suitability on the date of analysis. Triplicate injections of the Prior Lot are bracketed at the beginning and end of the sequence. %RSD criteria ensures proper system performance throughout the sequence.
- All instruments used for certification of the neat materials and verification of the solution concentration and homogeneity are fully qualified through an Installation Qualification and an Operational Qualification which is repeated annually. System suitability is performed daily with rigorous acceptance criteria to ensure the system continues to perform within the validated parameters.

Solution Standard Assay Parameters

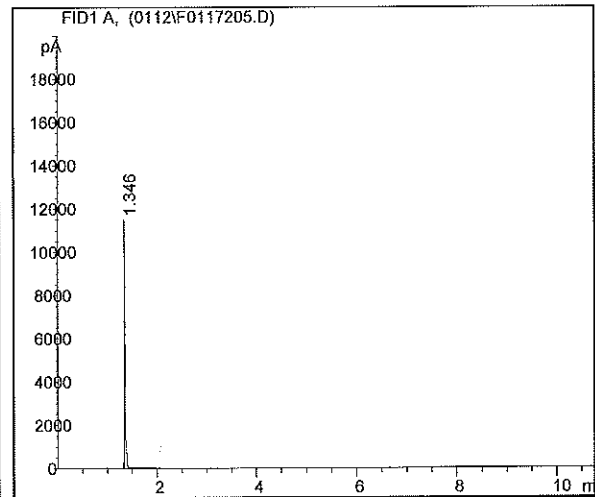
Analysis Method: GC/FID Headspace
 Column: DB-ALC1 30 m x 0.53 mm ID, 3.0 µm film thickness
 Temp Program: 40°C hold for 12 min
 Injector Temp: 200°C
 Detector Temp: 250°C



Neat Material Analysis

Purity by GC/FID Analysis: 100.0%
 Water Content by Karl Fischer: 0.10%
 Purity Factor: 99.90%

The purity factor (PF) mass balance measurement equation is used to calculate the amount of ethanol required to achieve an accurate concentration of the solution standard, accounting for both purity and residual water content.



Certificate of Analysis Reference Material

Lipomed Document QC-CA-ETH-40-1ML
Version: 002-21.Mar.2014

Supersedes: 001-13 Jan 2012

Product name: **40 mg/dL Aqueous Ethanol Standard Solution**
0.040 % by Mass (40 mg Ethanol / 1 dL Water) – 1 ml / ampoule
Ethyl alcohol

Lot Nr: 30112011-B
Art. Nr: ETH-40-1ML

Release date: January 16, 2012
Expiry date: **November 2016**

Bulk Product Information: Ethanol

Chemical formula:	C ₂ H ₆ O	Molwt: 46.07
CAS Registry Nr:	64-17-5	
Purity Ethanol	GC/FID: 100 %	
Water content	Karl Fischer: 0.08 %	

TEST	SPECIFICATIONS	RESULTS
1. Appearance	Clear colorless solution	conforms
2. Identity	GC/FID Headspace R _i corresponds to R _i of NIST reference standard (± 0.10 min)	R _i standard = 1.58 min R _i test = 1.58 min
3. Concentration of calibrated ampoule (GC/FID Headspace)	40.00 ± 0.80 mg/dL	39.29 ± 0.63 mg/dL^a (mean value) (Compared to NIST SRM 2891; 2892; 2893; 2894)
4. Extractable volume	> 1 ml	conforms
5. Water quality	Pharmaceutical water for injection	conforms

a : The concentration of the ampoules is calculated from the distribution of 6 GC/FID Headspace analyses compared with the calibration curve of 2 ampoules of each NIST SRM 2891; 2892; 2893; 2894 with a 95% level of confidence.
During the preparation, the content has been corrected to account for the purity of ethanol and residual water.

FOR ANALYTICAL PURPOSES ONLY: NOT FOR HUMAN OR ANIMAL USE!

Storage conditions: For maximum stability store air-tight below 30 °C in a dark location. Do not freeze.

Lipomed certifies that this standard meets the specifications stated in this certificate and warrants this product to meet the stated acceptance criteria through the expiry date when stored unopened as recommended. The product should be used shortly after opening to avoid concentration changes due to evaporation. Warranty does not apply to ampoules stored after opening.

QC - Officer: Deputy: Dr. L. Prévot

Date sign: Arlesheim,



March 21, 2014



Lipomed AG is ISO 9001:2008 certified and ISO/IEC 17025:2005, ISO Guide 34:2009 accredited.

SWITZERLAND: LIPOMED AG, FABRIKMATTENWEG 4, CH-4144 ARLESHEIM · ☎ +41 61 702 02 00 · FAX +41 61 702 02 20

GERMANY: LIPOMED GmbH, HEGENHEIMER STRASSE 2, D-79576 WEIL AM RHEIN ☎ +49 7621 1693 473 FAX +49 7621 1693 474

USA: LIPOMED INC., ONE BROADWAY, CAMBRIDGE, MA 02142 · ☎ (617) 577 7222 · FAX (617) 577 1776

INTERNET: <http://www.lipomed.com> e-mail: lipomed@lipomed.com

Ampoule to ampoule consistency:

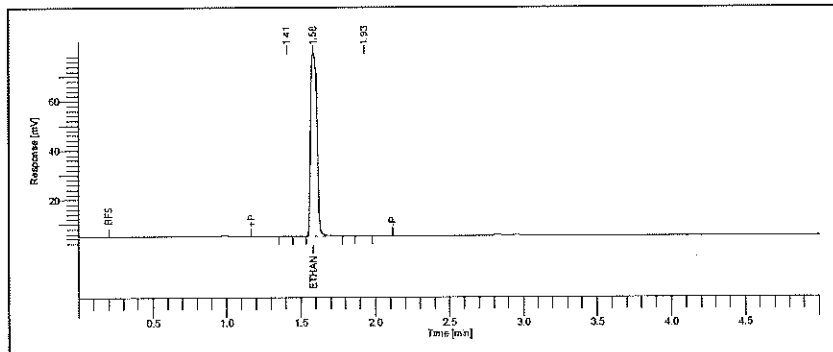
	Specification	Result
% RSD	< 2 %	1.6 %

Homogeneity of the lot is confirmed by an analysis of 6 ampoules. These samples are representative of the batch from which they were taken.

Lot to Lot Consistency:

Standard solution	Lot Number	Concentration
Actual Lot	30112011-B	39.29 ± 0.63 mg/dL
Previous Lot	N/A	N/A

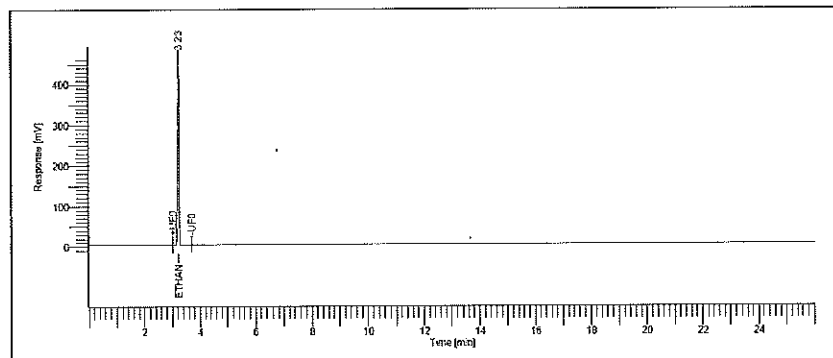
GC/FID Headspace Data: Calibration



Analytical conditions:

column:
Restek BAC 1, 30 m x 0.32 mm, 1.8 µm
Injektor: 200 °C, split 20 ml/min
FID: 300 °C
Ofen: 40 °C, 5 min isotherm
Helium 100 kPa (GC), 125 kPa (HS)
pressurization time: 2 min
injection time: 0.05 min
withdrawal time: 0.5 min
needle: 75 °C
transferline: 150 °C
Thermostatisierung: 60 °C, 15 min

GC/FID Data: Ethanol purity



Analytical conditions:

column:
BAC 1, 30 m x 0.32 mm, 1.8 µm
Injektor: 200 °C, split 20 ml/min
FID: 300 °C
Ofen: 40 °C, 5 min isotherm
Helium 100 kPa (GC), 125 kPa (HS)
range 1, attenuation -6
pressurization time: 2 min
injection time: 0.05 min
withdrawal time: 0.5 min
needle: 75 °C
transferline: 150 °C
Thermostatisierung: 60 °C, 25 min



Lipomed AG is ISO 9001:2008 certified and ISO/IEC 17025:2005, ISO Guide 34:2009 accredited.

SWITZERLAND: LIPOMED AG, FABRIKMATTENWEG 4, CH-4144 ARLESHEIM ☎ +41 61 702 02 00 · FAX +41 61 702 02 20

GERMANY: LIPOMED GmbH, HEGENHEIMER STRASSE 2, D-79576 WEIL AM RHEIN ☎ +49 7621 1693 473 FAX +49 7621 1693 474

USA: LIPOMED INC., ONE BROADWAY, CAMBRIDGE, MA 02142 · ☎ (617) 577 7222 · FAX (617) 577 1776

INTERNET: <http://www.lipomed.com> e-mail: lipomed@lipomed.com

GENERAL INFORMATION

Quality Documentation:

This certificate is designed in accordance with ISO Guide 31 (Reference Materials – Contents of Certificates and Labels) and ISO Guide 35 (Reference Materials – General and Statistical Principles for Certification).

Quality Standards:

- ISO 9001:2008** Quality Management System. Manufacturing, analysis, packaging and distribution of Analytical Reference Materials and Pharmaceuticals. IQNet/SQS Certification: 37199
- ISO/IEC 17025:2005** General requirements for the competence of Testing Analytical Reference Standards. ACLASS Certificate number: AT-1760
- ISO Guide 34:2009** General requirements for the competence of Reference Material Producer. ACLASS Certificate number: AR-1761

Quality Control Assessment:

The product quality is controlled by performed quality control tests with the calibration curve of 4 NIST standards during the release process.

Intended Use:

The product covered by this certificate is designed for calibration or for use in quality control procedures for the specified chemical compound listed page 1. This product can be used for quantification and/or identification. If dilution is required use only diluent compatible with all certified analyses in this preparation. All solutions should be thoroughly mixed prior to use.

Expiration date:

Expiration date of the unopened ampoule stored at the recommended storage condition is the last day of the month listed page 1.

Uncertainty, concentration and expiration date of the Reference Material are based on the unopened ampoule being stored according to the recommended condition found in the storage field.

Gravimetric preparation:

All balances are calibrated annually by an ISO/IEC 17025 accredited calibration service. Calibration verification is performed weekly with certified traceable weights. Each balance has been assigned a minimum weighing.

Purity:

- Purity and/or chemical identity are determined by one or more of the following techniques: GC/FID, GC/FID Headspace, IR, NMR and Karl Fischer
- Purity values are rounded up to the third decimal place
- The content is already corrected from the purity and residual water.

Uncertainty Statistics and Confidence limits:

The uncertainties are determined in accordance with ISO Guide 34 and 17025. The certified combined stressed uncertainty value (includes gravimetric uncertainty, homogeneity between ampoules uncertainty, storage stability uncertainty and shipping stability uncertainty) were combined using the following formula:

$$Uc(y) = k \sqrt{U_{characterization}^2 + U_{homogeneity}^2 + U_{storage\ stability}^2 + U_{shipping\ stability}^2}$$

K is a coverage factor of 2, which gives the level of confidence of approximately 95%.

The packaged amount is the minimum sample size for which uncertainty is valid. The ampoules are over-filled to ensure that the minimum packaged amount can be sufficiently transferred.

Homogeneity:

Homogeneity of the lot is confirmed by a duplicate analysis of 3 ampoules. These samples are representative of the batch from which they are taken.

Stability:

The manufacturer guarantees the stability of this solution through the date stated on page 1 of the certificate when handled and stored accordingly to the conditions stated page 1.

Legal Notice and Limit of Liability:

This product is for routine laboratory analysis and research proposal only. Due to the hazardous nature, only trained personnel should handle this product. The company's liability will be limited to replacement of product or refund or purchase price. Notice of claims must be made within thirty (30) days from date of delivery.



Lipomed AG is ISO 9001:2008 certified and ISO/IEC 17025:2005, ISO Guide 34:2009 accredited.

SWITZERLAND: LIPOMED AG, FABRIKMATTENWEG 4, CH-4144 ARLESHEIM · ☎ +41 61 702 02 00 · FAX +41 61 702 02 20

GERMANY: LIPOMED GmbH, HEGENHEIMER STRASSE 2, D-79576 WEIL AM RHEIN · ☎ +49 7621 1693 473 FAX +49 7621 1693 474

USA: LIPOMED INC., ONE BROADWAY, CAMBRIDGE, MA 02142 · ☎ (617) 577 7222 · FAX (617) 577 1776

INTERNET: <http://www.lipomed.com> e-mail: lipomed@lipomed.com

**Certificate of Analysis
Reference Material**

Lipomed Document QC-CA-ETH-80-1ML
Version: 002-21.Mar.2014

Supersedes: 001-22 Jun 2011

Product name: **80 mg/dL Aqueous Ethanol Standard Solution**
0.080 % by Mass (80 mg Ethanol / 1 dL Water) – 1 ml / ampoule
Ethyl alcohol

Lot Nr: 14112011-A
Art. Nr: ETH-80-1ML

Release date: January 26, 2012
Expiry date: **November 2016**

Bulk Product Information: Ethanol

Chemical formula: C₂H₆O Molwt: 46.07
CAS Registry Nr: 64-17-5
Purity Ethanol GC/FID: 100 %
Water content Karl Fischer: 0.08 %

TEST	SPECIFICATIONS	RESULTS
1. Appearance	Clear colorless solution	conforms
2. Identity	GC/FID Headspace R _t corresponds to R _t of NIST reference standard (± 0.10 min)	R _t standard = 1.58 min R _t test = 1.58 min
3. Concentration of calibrated ampoule (GC/FID Headspace)	80.00 ± 1.60 mg/dL	79.92 ± 1.37 mg/dL^a (mean value) (Compared to NIST SRM 2891; 2892; 2893; 2894)
4. Extractable volume	> 1 ml	conforms
5. Water quality	Pharmaceutical water for injection	conforms

a : The concentration of the ampoules is calculated from the distribution of 6 GC/FID Headspace analyses compared with the calibration curve of 2 ampoules of each NIST SRM 2891; 2892; 2893; 2894 with a 95% level of confidence.
During the preparation, the content has been corrected to account for the purity of ethanol and residual water.

FOR ANALYTICAL PURPOSES ONLY: NOT FOR HUMAN OR ANIMAL USE!

Storage conditions: For maximum stability store air-tight below 30 °C in a dark location. Do not freeze.

Lipomed certifies that this standard meets the specifications stated in this certificate and warrants this product to meet the stated acceptance criteria through the expiry date when stored unopened as recommended. The product should be used shortly after opening to avoid concentration changes due to evaporation. Warranty does not apply to ampoules stored after opening.

QC - Officer: Deputy: Dr. L. Prévot

Date sign: Arlesheim,



March 21, 2014



Lipomed AG is ISO 9001:2008 certified and ISO/IEC 17025:2005, ISO Guide 34:2009 accredited.

SWITZERLAND: LIPOMED AG, FABRIKMATTENWEG 4, CH-4144 ARLESHEIM · ☎ +41 61 702 02 00 · FAX +41 61 702 02 20
GERMANY: LIPOMED GmbH, HEGENHEIMER STRASSE 2, D-79576 WEIL AM RHEIN · ☎ +49 7621 1693 473 FAX +49 7621 1693 474
USA: LIPOMED INC., ONE BROADWAY, CAMBRIDGE, MA 02142 · ☎ (617) 577 7222 · FAX (617) 577 1776
INTERNET: <http://www.lipomed.com> e-mail: lipomed@lipomed.com

Ampoule to ampoule consistency:

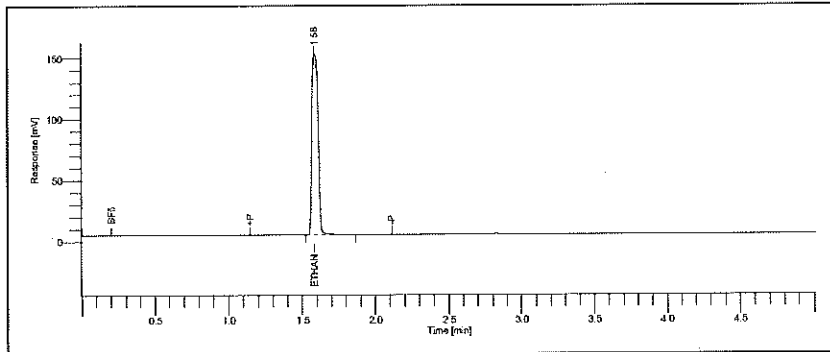
	Specification	Result
% RSD	< 2 %	1.72 %

Homogeneity of the lot is confirmed by an analysis of 6 ampoules. These samples are representative of the batch from which they were taken.

Lot to Lot Consistency:

Standard solution	Lot Number	Concentration
Actual Lot	14112011-A	79.92 ± 1.37 mg/dL
Previous Lot	21022011-A	80.13 ± 0.40 mg/dL

GC/FID Headspace Data: Calibration

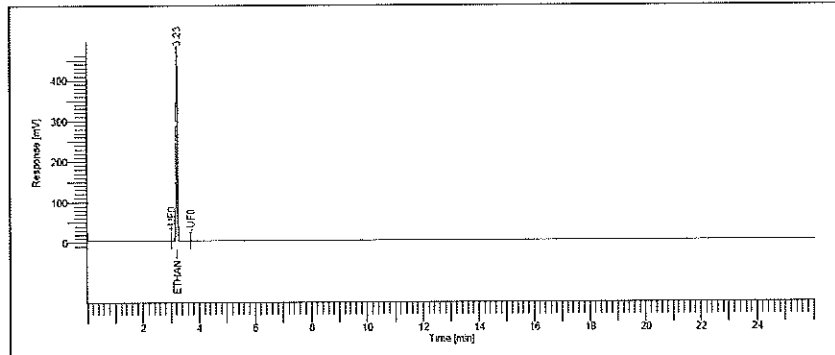


Analytical conditions:

column:
Restek BAC 1, 30 m x 0.32 mm, 1.8 µm
Injektor: 200 °C, split 20 ml/min
FID: 300 °C
Ofen: 40 °C, 5 min isotherm
Helium 100 kPa (GC), 125 kPa (HS)
pressurization time: 2 min
injection time: 0.05 min
withdrawal time: 0.5 min
needle: 75 °C
transferline: 150 °C
Thermostatisierung: 60 °C, 15 min

Peak #	Component Name	Time [min]	Area [µV*sec]	Area [%]
1	Ethanol	1.58	443327.0	100.000

GC/FID Data: Ethanol purity



Analytical conditions:

column:
BAC 1, 30 m x 0.32 mm, 1.8 µm
Injektor: 200 °C, split 20 ml/min
FID: 300 °C
Ofen: 40 °C, 5 min isotherm
Helium 100 kPa (GC), 125 kPa (HS)
range 1, attenuation -6
pressurization time: 2 min
injection time: 0.05 min
withdrawal time: 0.5 min
needle: 75 °C
transferline: 150 °C
Thermostatisierung: 60 °C, 25 min



Lipomed AG is ISO 9001:2008 certified and ISO/IEC 17025:2005, ISO Guide 34:2009 accredited.

SWITZERLAND: LIPOMED AG, FABRIKMATTENWEG 4, CH-4144 ARLESHEIM · ☎ +41 61 702 02 00 · FAX +41 61 702 02 20
GERMANY: LIPOMED GmbH, HEGENHEIMER STRASSE 2, D-79576 WEIL AM RHEIN ☎ +49 7621 1693 473 FAX +49 7621 1693 474
USA: LIPOMED INC., ONE BROADWAY, CAMBRIDGE, MA 02142 · ☎ (617) 577 7222 · FAX (617) 577 1776
INTERNET: <http://www.lipomed.com> e-mail: lipomed@lipomed.com

GENERAL INFORMATION

Quality Documentation:

This certificate is designed in accordance with ISO Guide 31 (Reference Materials – Contents of Certificates and Labels) and ISO Guide 35 (Reference Materials – General and Statistical Principles for Certification).

Quality Standards:

- ISO 9001:2008** Quality Management System. Manufacturing, analysis, packaging and distribution of Analytical Reference Materials and Pharmaceuticals. IQNet/SQS Certification: 37199
- ISO/IEC 17025:2005** General requirements for the competence of Testing Analytical Reference Standards. ACLASS Certificate number: AT-1760
- ISO Guide 34:2009** General requirements for the competence of Reference Material Producer. ACLASS Certificate number: AR-1761

Quality Control Assessment:

The product quality is controlled by performed quality control tests with the calibration curve of 4 NIST standards during the release process.

Intended Use:

The product covered by this certificate is designed for calibration or for use in quality control procedures for the specified chemical compound listed page 1. This product can be used for quantification and/or identification. If dilution is required use only diluent compatible with all certified analyses in this preparation. All solutions should be thoroughly mixed prior to use.

Expiration date:

Expiration date of the unopened ampoule stored at the recommended storage condition is the last day of the month listed page 1.

Uncertainty, concentration and expiration date of the Reference Material are based on the unopened ampoule being stored according to the recommended condition found in the storage field.

Gravimetric preparation:

All balances are calibrated annually by an ISO/IEC 17025 accredited calibration service. Calibration verification is performed weekly with certified traceable weights. Each balance has been assigned a minimum weighing.

Purity:

- Purity and/or chemical identity are determined by one or more of the following techniques: GC/FID, GC/FID Headspace, IR, NMR and Karl Fischer
- Purity values are rounded up to the third decimal place
- The content is already corrected from the purity and residual water.

Uncertainty Statistics and Confidence limits:

The uncertainties are determined in accordance with ISO Guide 34 and 17025. The certified combined stressed uncertainty value (includes gravimetric uncertainty, homogeneity between ampoules uncertainty, storage stability uncertainty and shipping stability uncertainty) were combined using the following formula:

$$Uc(y) = k \sqrt{U_{characterization}^2 + U_{homogeneity}^2 + U_{storage\ stability}^2 + U_{shipping\ stability}^2}$$

K is a coverage factor of 2, which gives the level of confidence of approximately 95%.

The packaged amount is the minimum sample size for which uncertainty is valid. The ampoules are over-filled to ensure that the minimum packaged amount can be sufficiently transferred.

Homogeneity:

Homogeneity of the lot is confirmed by a duplicate analysis of 3 ampoules. These samples are representative of the batch from which they are taken.

Stability:

The manufacturer guarantees the stability of this solution through the date stated on page 1 of the certificate when handled and stored accordingly to the conditions stated page 1.

Legal Notice and Limit of Liability:

This product is for routine laboratory analysis and research proposal only. Due to the hazardous nature, only trained personnel should handle this product. The company's liability will be limited to replacement of product or refund or purchase price. Notice of claims must be made within thirty (30) days from date of delivery.



Lipomed AG is ISO 9001:2008 certified and ISO/IEC 17025:2005, ISO Guide 34:2009 accredited.

SWITZERLAND: LIPOMED AG, FABRIKMATTENWEG 4, CH-4144 ARLESHEIM · ☎ +41 61 702 02 00 · FAX +41 61 702 02 20

GERMANY: LIPOMED GmbH, HEGENHEIMER STRASSE 2, D-79576 WEIL AM RHEIN ☎ +49 7621 1693 473 FAX +49 7621 1693 474

USA: LIPOMED INC., ONE BROADWAY, CAMBRIDGE, MA 02142 · ☎ (617) 577 7222 · FAX (617) 577 1776

INTERNET: <http://www.lipomed.com> e-mail: lipomed@lipomed.com

**Certificate of Analysis
Reference Material**

Lipomed Document QC-CA-ETH-150-1ML
Version: 002-21.Mar.2014

Supersedes: 001-22 Jun 2011

Product name: **150 mg/dL Aqueous Ethanol Standard Solution**
0.150 % by Mass (150 mg Ethanol / 1 dL Water) – 1 ml / ampoule
Ethyl alcohol

Lot Nr: 11012012-C
Art. Nr: ETH-150-1ML

Release date: February 09, 2012
Expiry date: **January 2017**

Bulk Product Information: Ethanol

Chemical formula: C₂H₆O Molwt: 46.07
CAS Registry Nr: 64-17-5
Purity Ethanol GC/FID: 100 %
Water content Karl Fischer: 0.08 %

TEST	SPECIFICATIONS	RESULTS
1. Appearance	Clear colorless solution	conforms
2. Identity	GC/FID Headspace R _t corresponds to R _t of NIST reference standard (± 0.10 min)	R _t standard = 1.56 min R _t test = 1.56 min
3. Concentration of calibrated ampoule (GC/FID Headspace)	150.00 ± 3.00 mg/dL	150.04 ± 1.35 mg/dL^a (mean value) (Compared to NIST SRM 2893; 2894; 2895; 2896)
4. Extractable volume	> 1 ml	conforms
5. Water quality	Pharmaceutical water for injection	conforms

a : The concentration of the ampoules is calculated from the distribution of 6 GC/FID Headspace analyses compared with the calibration curve of 2 ampoules of each NIST SRM 2893; 2894; 2895; 2896 with a 95% level of confidence.
During the preparation, the content has been corrected to account for the purity of ethanol and residual water.

FOR ANALYTICAL PURPOSES ONLY: NOT FOR HUMAN OR ANIMAL USE!

Storage conditions: For maximum stability store air-tight below 30 °C in a dark location. Do not freeze.

Lipomed certifies that this standard meets the specifications stated in this certificate and warrants this product to meet the stated acceptance criteria through the expiry date when stored unopened as recommended. The product should be used shortly after opening to avoid concentration changes due to evaporation. Warranty does not apply to ampoules stored after opening.

QC - Officer: Deputy: Dr. L. Prévot

Date sign: Arlesheim,



March 21, 2014



Lipomed AG is ISO 9001:2008 certified and ISO/IEC 17025:2005, ISO Guide 34:2009 accredited.

SWITZERLAND: LIPOMED AG, FABRIKMATTENWEG 4, CH-4144 ARLESHEIM ☎ +41 61 702 02 00 · FAX +41 61 702 02 20
GERMANY: LIPOMED GmbH, HEGENHEIMER STRASSE 2, D-79576 WEIL AM RHEIN ☎ +49 7621 1693 473 FAX +49 7621 1693 474
USA: LIPOMED INC., ONE BROADWAY, CAMBRIDGE, MA 02142 · ☎ (617) 577 7222 · FAX (617) 577 1776
INTERNET: <http://www.lipomed.com> e-mail: lipomed@lipomed.com

Ampoule to ampoule consistency:

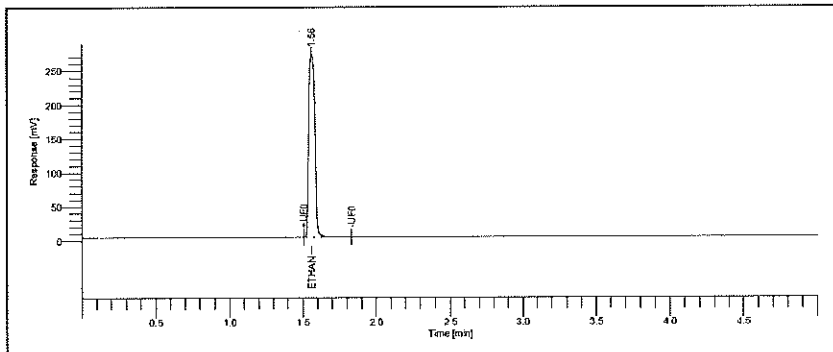
	Specification	Result
% RSD	< 2 %	0.90 %

Homogeneity of the lot is confirmed by an analysis of 6 ampoules. These samples are representative of the batch from which they were taken.

Lot to Lot Consistency:

Standard solution	Lot Number	Concentration
Actual Lot	11012012-C	150.04 ± 1.35 mg/dL
Previous Lot	22022011-A	151.49 ± 0.59 mg/dL

GC/FID Headspace Data: Calibration

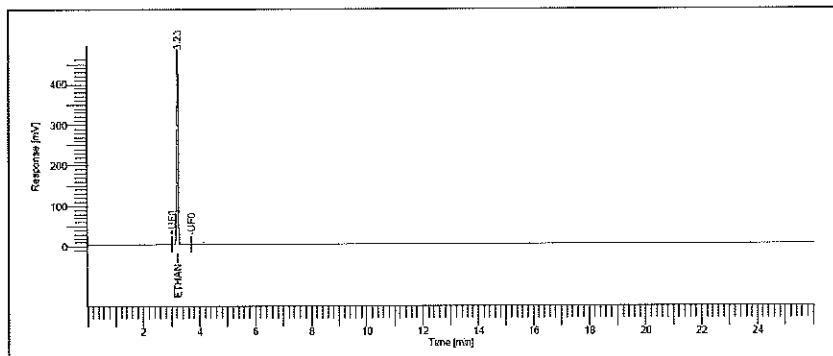


Analytical conditions:

column:
Restek BAC 1, 30 m x 0.32 mm, 1.8 µm
Injektor: 200 °C, split 20 ml/min
FID: 300 °C
Ofen: 40 °C, 5 min isotherm
Helium 100 kPa (GC), 125 kPa (HS)
pressurization time: 2 min
injection time: 0.05 min
withdrawal time: 0.5 min
needle: 75 °C
transferline: 150 °C
Thermostatisierung: 60 °C, 15 min

Peak #	Component Name	Time [min]	Area [µV*sec]	Area [%]
1	Ethanol	1.56	777173.3	100.000

GC/FID Data: Ethanol purity



Analytical conditions:

column:
BAC 1, 30 m x 0.32 mm, 1.8 µm
Injektor: 200 °C, split 20 ml/min
FID: 300 °C
Ofen: 40 °C, 5 min isotherm
Helium 100 kPa (GC), 125 kPa (HS)
range 1, attenuation -6
pressurization time: 2 min
injection time: 0.05 min
withdrawal time: 0.5 min
needle: 75 °C
transferline: 150 °C
Thermostatisierung: 60 °C, 25 min



Lipomed AG is ISO 9001:2008 certified and ISO/IEC 17025:2005, ISO Guide 34:2009 accredited.

SWITZERLAND: LIPOMED AG, FABRIKMATTENWEG 4, CH-4144 ARLESHEIM · ☎ +41 61 702 02 00 · FAX +41 61 702 02 20

GERMANY: LIPOMED GmbH, HEGENHEIMER STRASSE 2, D-79576 WEIL AM RHEIN · ☎ +49 7621 1693 473 FAX +49 7621 1693 474

USA: LIPOMED INC., ONE BROADWAY, CAMBRIDGE, MA 02142 · ☎ (617) 577 7222 · FAX (617) 577 1776

INTERNET: <http://www.lipomed.com> e-mail: lipomed@lipomed.com

GENERAL INFORMATION

Quality Documentation:

This certificate is designed in accordance with ISO Guide 31 (Reference Materials – Contents of Certificates and Labels) and ISO Guide 35 (Reference Materials – General and Statistical Principles for Certification).

Quality Standards:

- ISO 9001:2008** Quality Management System. Manufacturing, analysis, packaging and distribution of Analytical Reference Materials and Pharmaceuticals. IQNet/SQS Certification: 37199
- ISO/IEC 17025:2005** General requirements for the competence of Testing Analytical Reference Standards. ACLASS Certificate number: AT-1760
- ISO Guide 34:2009** General requirements for the competence of Reference Material Producer. ACLASS Certificate number: AR-1761

Quality Control Assessment:

The product quality is controlled by performed quality control tests with the calibration curve of 4 NIST standards during the release process.

Intended Use:

The product covered by this certificate is designed for calibration or for use in quality control procedures for the specified chemical compound listed page 1. This product can be used for quantification and/or identification. If dilution is required use only diluent compatible with all certified analyses in this preparation. All solutions should be thoroughly mixed prior to use.

Expiration date:

Expiration date of the unopened ampoule stored at the recommended storage condition is the last day of the month listed page 1.

Uncertainty, concentration and expiration date of the Reference Material are based on the unopened ampoule being stored according to the recommended condition found in the storage field.

Gravimetric preparation:

All balances are calibrated annually by an ISO/IEC 17025 accredited calibration service. Calibration verification is performed weekly with certified traceable weights. Each balance has been assigned a minimum weighing.

Purity:

- Purity and/or chemical identity are determined by one or more of the following techniques: GC/FID, GC/FID Headspace, IR, NMR and Karl Fischer
- Purity values are rounded up to the third decimal place
- The content is already corrected from the purity and residual water.

Uncertainty Statistics and Confidence limits:

The uncertainties are determined in accordance with ISO Guide 34 and 17025. The certified combined stressed uncertainty value (includes gravimetric uncertainty, homogeneity between ampoules uncertainty, storage stability uncertainty and shipping stability uncertainty) were combined using the following formula:

$$U_c(y) = k \sqrt{U_{\text{characterization}}^2 + U_{\text{homogeneity}}^2 + U_{\text{storage stability}}^2 + U_{\text{shipping stability}}^2}$$

K is a coverage factor of 2, which gives the level of confidence of approximately 95%.

The packaged amount is the minimum sample size for which uncertainty is valid. The ampoules are over-filled to ensure that the minimum packaged amount can be sufficiently transferred.

Homogeneity:

Homogeneity of the lot is confirmed by a duplicate analysis of 3 ampoules. These samples are representative of the batch from which they are taken.

Stability:

The manufacturer guarantees the stability of this solution through the date stated on page 1 of the certificate when handled and stored accordingly to the conditions stated page 1.

Legal Notice and Limit of Liability:

This product is for routine laboratory analysis and research proposal only. Due to the hazardous nature, only trained personnel should handle this product. The company's liability will be limited to replacement of product or refund or purchase price. Notice of claims must be made within thirty (30) days from date of delivery.



Lipomed AG is ISO 9001:2008 certified and ISO/IEC 17025:2005, ISO Guide 34:2009 accredited.

SWITZERLAND: LIPOMED AG, FABRIKMATTENWEG 4, CH-4144 ARLESHEIM · ☎ +41 61 702 02 00 · FAX +41 61 702 02 20

GERMANY: LIPOMED GmbH, HEGENHEIMER STRASSE 2, D-79576 WEIL AM RHEIN · ☎ +49 7621 1693 473 FAX +49 7621 1693 474

USA: LIPOMED INC., ONE BROADWAY, CAMBRIDGE, MA 02142 · ☎ (617) 577 7222 · FAX (617) 577 1776

INTERNET: <http://www.lipomed.com> e-mail: lipomed@lipomed.com

Certificate of Analysis Reference Material

Lipomed Document QC-CA-ETH-400-1ML
Version: 002-24.Mar.2014

Supersedes: 001-22 Jun 2011

Product name: **400 mg/dL Aqueous Ethanol Standard Solution**
0.400 % by Mass (400 mg Ethanol / 1 dL Water) – 1 ml / ampoule
Ethyl alcohol

Lot Nr: 05012012-C
Art. Nr: ETH-400-1ML

Release date: January 27, 2012
Expiry date: **January 2017**

Bulk Product Information: Ethanol

Chemical formula: C₂H₆O Molwt: 46.07
CAS Registry Nr: 64-17-5
Purity Ethanol GC/FID: 100 %
Water content Karl Fischer: 0.08 %

TEST	SPECIFICATIONS	RESULTS
1. Appearance	Clear colorless solution	conforms
2. Identity	GC/FID Headspace R _t corresponds to R _t of NIST reference standard (± 0.10 min)	R _t standard = 1.57 min R _t test = 1.57 min
3. Concentration of calibrated ampoule (GC/FID Headspace)	400.00 ± 8.00 mg/dL	400.73 ± 3.31 mg/dL^a (mean value) (Compared to NIST SRM 2893; 2894; 2895; 2896)
4. Extractable volume	> 1 ml	conforms
5. Water quality	Pharmaceutical water for injection	conforms

a : The concentration of the ampoules is calculated from the distribution of 6 GC/FID Headspace analyses compared with the calibration curve of 2 ampoules of each NIST SRM 2893; 2894; 2895; 2896 with a 95% level of confidence. During the preparation, the content has been corrected to account for the purity of ethanol and residual water.

FOR ANALYTICAL PURPOSES ONLY: NOT FOR HUMAN OR ANIMAL USE!

Storage conditions: For maximum stability store air-tight below 30 °C in a dark location. Do not freeze.

Lipomed certifies that this standard meets the specifications stated in this certificate and warrants this product to meet the stated acceptance criteria through the expiry date when stored unopened as recommended. The product should be used shortly after opening to avoid concentration changes due to evaporation. Warranty does not apply to ampoules stored after opening.

QC - Officer: Deputy: Dr. L. Prévot

Date sign: Arlesheim,



March 24, 2014



Lipomed AG is ISO 9001:2008 certified and ISO/IEC 17025:2005, ISO Guide 34:2009 accredited.

SWITZERLAND: LIPOMED AG, FABRIKMATTENWEG 4, CH-4144 ARLESHEIM · ☎ +41 61 702 02 00 · FAX +41 61 702 02 20
GERMANY: LIPOMED GmbH, HEGENHEIMER STRASSE 2, D-79576 WEIL AM RHEIN · ☎ +49 7621 1693 473 FAX +49 7621 1693 474
USA: LIPOMED INC., ONE BROADWAY, CAMBRIDGE, MA 02142 · ☎ (617) 577 7222 · FAX (617) 577 1776
INTERNET: <http://www.lipomed.com> e-mail: lipomed@lipomed.com

Ampoule to ampoule consistency:

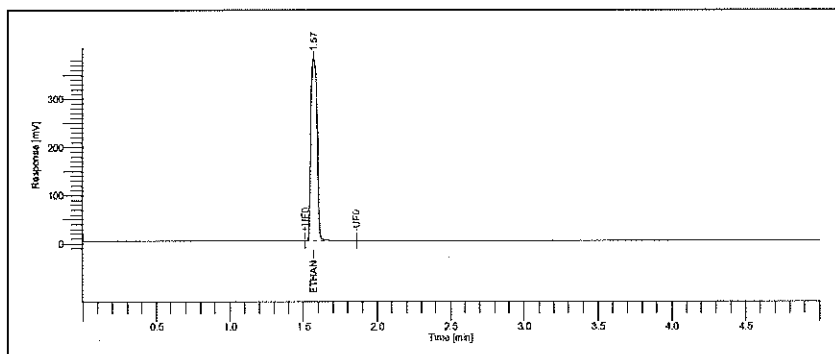
	Specification	Result
% RSD	< 2 %	0.83 %

Homogeneity of the lot is confirmed by an analysis of 6 ampoules. These samples are representative of the batch from which they were taken.

Lot to Lot Consistency:

Standard solution	Lot Number	Concentration
Actual Lot	05012012-C	400.73 ± 3.31 mg/dL
Previous Lot	09032011-G	402.89 ± 4.86 mg/dL

GC/FID Headspace Data: Calibration

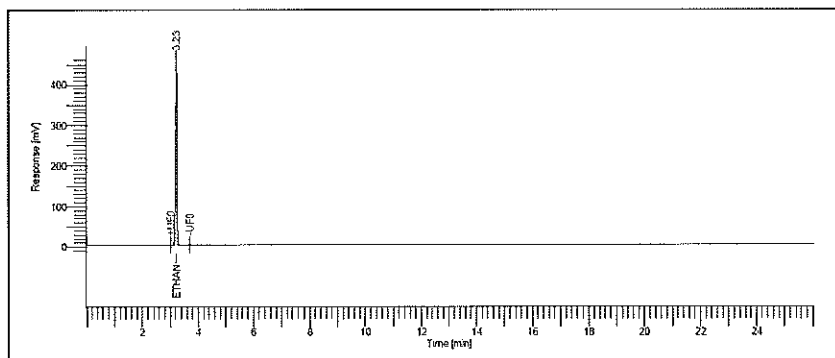


Analytical conditions:

column:
Restek BAC 1, 30 m x 0.32 mm, 1.8 µm
Injektor: 200 °C, split 20 ml/min
FID: 300 °C
Ofen: 40 °C, 5 min isotherm
Helium 100 kPa (GC), 125 kPa (HS)
pressurization time: 2 min
injection time: 0.05 min
withdrawal time: 0.5 min
needle: 75 °C
transferline: 150 °C
Thermostatisierung: 60 °C, 15 min

Peak #	Component Name	Time [min]	Area [µV*sec]	Area [%]
1	Ethanol	1.57	1122371.7	100.000

GC/FID Data: Ethanol purity



Analytical conditions:

column:
BAC 1, 30 m x 0.32 mm, 1.8 µm
Injektor: 200 °C, split 20 ml/min
FID: 300 °C
Ofen: 40 °C, 5 min isotherm
Helium 100 kPa (GC), 125 kPa (HS)
range 1, attenuation -6
pressurization time: 2 min
injection time: 0.05 min
withdrawal time: 0.5 min
needle: 75 °C
transferline: 150 °C
Thermostatisierung: 60 °C, 25 min



Lipomed AG is ISO 9001:2008 certified and ISO/IEC 17025:2005, ISO Guide 34:2009 accredited.

SWITZERLAND: LIPOMED AG, FABRIKMATTENWEG 4, CH-4144 ARLESHEIM · ☎ +41 61 702 02 00 · FAX +41 61 702 02 20
GERMANY: LIPOMED GmbH, HEGENHEIMER STRASSE 2, D-79576 WEIL AM RHEIN · ☎ +49 7621 1693 473 FAX +49 7621 1693 474
USA: LIPOMED INC., ONE BROADWAY, CAMBRIDGE, MA 02142 · ☎ (617) 577 7222 · FAX (617) 577 1776
INTERNET: <http://www.lipomed.com> e-mail: lipomed@lipomed.com

GENERAL INFORMATION

Quality Documentation:

This certificate is designed in accordance with ISO Guide 31 (Reference Materials – Contents of Certificates and Labels) and ISO Guide 35 (Reference Materials – General and Statistical Principles for Certification).

Quality Standards:

ISO 9001:2008	Quality Management System. Manufacturing, analysis, packaging and distribution of Analytical Reference Materials and Pharmaceuticals. IQNet/SQS Certification: 37199
ISO/IEC 17025:2005	General requirements for the competence of Testing Analytical Reference Standards. ACLASS Certificate number: AT-1760
ISO Guide 34:2009	General requirements for the competence of Reference Material Producer. ACLASS Certificate number: AR-1761

Quality Control Assessment:

The product quality is controlled by performed quality control tests with the calibration curve of 4 NIST standards during the release process.

Intended Use:

The product covered by this certificate is designed for calibration or for use in quality control procedures for the specified chemical compound listed page 1. This product can be used for quantification and/or identification. If dilution is required use only diluent compatible with all certified analyses in this preparation. All solutions should be thoroughly mixed prior to use.

Expiration date:

Expiration date of the unopened ampoule stored at the recommended storage condition is the last day of the month listed page 1.

Uncertainty, concentration and expiration date of the Reference Material are based on the unopened ampoule being stored according to the recommended condition found in the storage field.

Gravimetric preparation:

All balances are calibrated annually by an ISO/IEC 17025 accredited calibration service. Calibration verification is performed weekly with certified traceable weights. Each balance has been assigned a minimum weighing.

Purity:

- Purity and/or chemical identity are determined by one or more of the following techniques: GC/FID, GC/FID Headspace, IR, NMR and Karl Fischer
- Purity values are rounded up to the third decimal place
- The content is already corrected from the purity and residual water.

Uncertainty Statistics and Confidence limits:

The uncertainties are determined in accordance with ISO Guide 34 and 17025. The certified combined stressed uncertainty value (includes gravimetric uncertainty, homogeneity between ampoules uncertainty, storage stability uncertainty and shipping stability uncertainty) were combined using the following formula:

$$Uc(y) = k \sqrt{U_{characterization}^2 + U_{homogeneity}^2 + U_{storage\ stability}^2 + U_{shipping\ stability}^2}$$

K is a coverage factor of 2, which gives the level of confidence of approximately 95%.

The packaged amount is the minimum sample size for which uncertainty is valid. The ampoules are over-filled to ensure that the minimum packaged amount can be sufficiently transferred.

Homogeneity:

Homogeneity of the lot is confirmed by a duplicate analysis of 3 ampoules. These samples are representative of the batch from which they are taken.

Stability:

The manufacturer guarantees the stability of this solution through the date stated on page 1 of the certificate when handled and stored accordingly to the conditions stated page 1.

Legal Notice and Limit of Liability:

This product is for routine laboratory analysis and research proposal only. Due to the hazardous nature, only trained personnel should handle this product. The company's liability will be limited to replacement of product or refund or purchase price. Notice of claims must be made within thirty (30) days from date of delivery.



Lipomed AG is ISO 9001:2008 certified and ISO/IEC 17025:2005, ISO Guide 34:2009 accredited.

SWITZERLAND: LIPOMED AG, FABRIKMATTENWEG 4, CH-4144 ARLESHEIM · ☎ +41 61 702 02 00 · FAX +41 61 702 02 20

GERMANY: LIPOMED GmbH, HEGENHEIMER STRASSE 2, D-79576 WEIL AM RHEIN · ☎ +49 7621 1693 473 FAX +49 7621 1693 474

USA: LIPOMED INC., ONE BROADWAY, CAMBRIDGE, MA 02142 · ☎ (617) 577 7222 · FAX (617) 577 1776

INTERNET: <http://www.lipomed.com> e-mail: lipomed@lipomed.com

EtOH WH 2,0 g/L – In vitro diagnosticum

Ethanolkontrollen im Vollblut

Anwendung

Die Probe ist als Richtigkeitskontrolle und Kalibrator für die Ethanolbestimmung einsetzbar.

Gebrauchsanweisung

Die Probe ist gebrauchsfertig und entsprechend der eigenen Laborvorschriften einzusetzen.

Zielwert

Die Ethanol-Konzentration wurde von 3 akkreditierten Laboratorien (DIN EN 17025) ermittelt. Es wurde eine Doppelbestimmung mit einer GC Methode pro Tag an 5 Tagen durchgeführt.

Lagerung und Haltbarkeit

Lagerung: + 2° bis + 8° C

Haltbarkeit:

- Original verschlossen, lichtgeschützt: siehe Verfallsdatum auf der Packung.
- Dicht verschlossen, lichtgeschützt: siehe Verfallsdatum auf der Packung.

Vorsichtsmaßnahmen

Alle Materialien humanen Ursprungs sind grundsätzlich mit derselben Sorgfalt wie potentiell infektiöse Patientenproben zu behandeln. Jede zur Herstellung verwendete Bluteinheit wurde auf Antigen und Antikörper geprüft und für negativ befunden: HBsAG, anti-HIV-1, anti-HIV-2, anti-HBc und anti-HCV.

Ch.-B: 402101060

Best.-Nr.: WH20-015 (10 x 1,5 ml)
WH20-030 (10 x 3,0 ml)

Version: 3 – 201303

EtOH WH 2.0 g/l – For in vitro diagnostic use

Ethanol control in whole blood

Application

This material should be used in accordance with the laboratory's operating procedures for instrument calibration or as a control material.

User guide

This ACQ Science EtOH WH requires no additional preparation and is ready for use.

Assigned value

The assigned ethanol concentration was determined by 3 Independent laboratories, each accredited to DIN EN 17025. Repeat determinations were carried out daily on 5 days using Gas Chromatography.

Storage and stability

Storage: 2° to 8° C

Stability:

- Sealed container, stored in the dark: see expiration date on the package.
- Stored in the dark tightly capped: see expiration date on package

Precautions

All materials of human origin should be considered as potentially infectious and treated with the same care as patient specimens. Each individual original blood unit used for the production of the control was tested for the following antigens and antibodies: HBsAG, anti-HIV-1, anti-HIV-2, anti-HBc and anti-HCV and found to be negative.

Lot: 402101060

Order no.: WH20-015 (10 x 1.5 ml)
WH20-030 (10 x 3.0 ml)

Version: 3 – 201303

Messverfahren Method	Zielwert Target value	Konfidenzbereiche / Confidence ranges			Einheit Unit
		statistisch / statistical ¹	forensisch / forensic ²	klinisch / clinical ³	
GC	2,002	1,949 – 2,056	1,902 – 2,102	1,822 – 2,182	g/L

¹ Konfidenzbereich – Analysenwerte

Der Konfidenzbereich gibt den Bereich an, in dem der Zielwert mit einer Wahrscheinlichkeit von 95% liegt.

² Konfidenzbereich – Deutsche forensische Richtlinie

Für [EtOH] ≥ 1,0 g/L → Konfidenzbereich ± 5% von dem Zielwert
Für [EtOH] < 1,0 g/L → Konfidenzbereich ± 0,05 g/L von dem Zielwert

Literatur:

Bundesgesundheitsamt (1966) - Richtlinie für die Blutalkoholbestimmung für forensische Zwecke.
DACH(23.04.2008) - Spezieller Leitfaden für die Blutalkoholbestimmung für forensische Zwecke – VA 0900-54 Version1

³ Konfidenzbereich – Richtlinie der deutschen Bundesärztekammer

Für 0,2 < [EtOH] ≤ 0,6 g/L → Konfidenzbereich ± 15 % vom Zielwert
Für 0,6 < [EtOH] ≤ 5,0 g/L → Konfidenzbereich ± 9 % vom Zielwert

Literatur:

Richtlinien der Bundesärztekammer zur Qualitätssicherung laboratoriumsmedizinischer Untersuchungen (15.02.2008)

GI_EtOHWH_20_402101060_De_En_20130325.doc

¹ Confidence ranges – measured values

The confidence interval indicates the range in which the target value is located with a significance level of 95%.

² Confidence ranges – German forensic directives

[EtOH] ≥ 1.0 g/l → ± 5% from the target value
[EtOH] < 1.0 g/l → ± 0.05 g/l from the target value

References:

Bundesgesundheitsamt (1966) - Richtlinie für die Blutalkoholbestimmung für forensische Zwecke.
DACH(23.04.2008) - Spezieller Leitfaden für die Blutalkoholbestimmung für forensische Zwecke – VA 0900-54 Version1

³ Confidence ranges – Directive of the German Medical Association

0.2 < [EtOH] ≤ 0.6 g/l → ± 15 % from the target value
0.6 < [EtOH] ≤ 5.0 g/l → ± 9 % from the target value

References:

Richtlinien der Bundesärztekammer zur Qualitätssicherung laboratoriumsmedizinischer Untersuchungen (15.02.2008)

Hersteller / Manufacturer

ACQ Science GmbH
Etzwiesenstraße 37
72108 Rottenburg-Hailfingen
Germany

Tel.: + 49 (0) 7457 94 69 3 0
Fax: + 49 (0) 7457 94 69 3 69
E-mail: info@acq-science.de



IVD 10 x 1,5 ml (liq.) REF WH20-015-01-3

EtOH Check WH 2,0 g/l

Ethanolkontrolle im Vollblut

Ethanol control in whole blood

Contrôle d'éthanol dans le sang total

LOT 402101060/3

2015-10

2°C / 8°C



ACQ SCIENCE



ACQ Science GmbH

Etzwiesenstraße 37, 72108 Rottenburg-Hallfingen Germany, Tel. +49 (0) 7457 946 93-0

EtOH WH 2,0 g/L – In vitro diagnosticum

Ethanolkontrollen im Vollblut

Anwendung

Die Probe ist als Richtigkeitskontrolle und Kalibrator für die Ethanolbestimmung einsetzbar.

Gebrauchsanweisung

Die Probe ist gebrauchsfertig und entsprechend der eigenen Laborvorschriften einzusetzen.

Zielwert

Die Ethanol-Konzentration wurde von 3 akkreditierten Laboratorien (DIN EN 17025) ermittelt. Es wurde eine Doppelbestimmung mit einer GC Methode pro Tag an 5 Tagen durchgeführt.

Lagerung und Haltbarkeit

Lagerung: + 2° bis + 8° C

Haltbarkeit:

- Original verschlossen, lichtgeschützt: siehe Verfallsdatum auf der Packung.
- Dicht verschlossen, lichtgeschützt: siehe Verfallsdatum auf der Packung.

Vorsichtsmaßnahmen

Alle Materialien humanen Ursprungs sind grundsätzlich mit derselben Sorgfalt wie potentiell infektiöse Patientenproben zu behandeln. Jede zur Herstellung verwendete Bluteinheit wurde auf Antigen und Antikörper geprüft und für negativ befunden: HBsAG, anti-HIV-1, anti-HIV-2, anti-HBc und anti-HCV.

Ch.-B: 402101060
 Best.-Nr.: WH20-015 (10 x 1,5 ml)
 WH20-030 (10 x 3,0 ml)
 Version: 3 - 201303

EtOH WH 2.0 g/l – For in vitro diagnostic use

Ethanol control in whole blood

Application

This material should be used in accordance with the laboratory's operating procedures for instrument calibration or as a control material.

User guide

This ACQ Science EtOH WH requires no additional preparation and is ready for use.

Assigned value

The assigned ethanol concentration was determined by 3 independent laboratories, each accredited to DIN EN 17025. Repeat determinations were carried out daily on 5 days using Gas Chromatography.

Storage and stability

Storage: 2 ° to 8 ° C

Stability:

- Sealed container, stored in the dark: see expiration date on the package.
- Stored in the dark tightly capped: see expiration date on package

Precautions

All materials of human origin should be considered as potentially infectious and treated with the same care as patient specimens. Each individual original blood unit used for the production of the control was tested for the following antigens and antibodies: HBsAG, anti-HIV-1, anti-HIV-2, anti-HBc and anti-HCV and found to be negative.

Lot: 402101060
 Order no.: WH20-015 (10 x 1.5 ml)
 WH20-030 (10 x 3.0 ml)
 Version: 3 - 201303

Messverfahren Method	Zielwert Target value	Konfidenzbereiche / Confidence ranges			Einheit Unit
		statistisch / statistical ¹	forensisch / forensic ²	klinisch / clinical ³	
GC	2,002	1,949 – 2,055	1,902 – 2,102	1,822 – 2,182	g/L

¹ Konfidenzbereich – Analysenwerte

Der Konfidenzbereich gibt den Bereich an, in dem der Zielwert mit einer Wahrscheinlichkeit von 95% liegt.

² Konfidenzbereich – Deutsche forensische Richtlinie

Für [EtOH] ≥ 1,0 g/L → Konfidenzbereich ± 5% von dem Zielwert
 Für [EtOH] < 1,0 g/L → Konfidenzbereich ± 0,05 g/L von dem Zielwert

Literatur:

Bundesgesundheitsamt (1966) - Richtlinie für die Blutalkoholbestimmung für forensische Zwecke.
 DACH(23.04.2008) - Spezieller Leitfaden für die Blutalkoholbestimmung für forensische Zwecke – VA 0900-54 Version1

³ Konfidenzbereich – Richtlinie der deutschen Bundesärztekammer

Für 0,2 < [EtOH] ≤ 0,6 g/L → Konfidenzbereich ± 15 % vom Zielwert
 Für 0,6 < [EtOH] ≤ 5,0 g/L → Konfidenzbereich ± 9 % vom Zielwert

Literatur:

Richtlinien der Bundesärztekammer zur Qualitätssicherung laboratoriumsmedizinischer Untersuchungen (15.02.2008)

GI_EtOHWH_20_402101060_De_En_20130325.doc

¹ Confidence ranges – measured values

The confidence interval indicates the range in which the target value is located with a significance level of 95%.

² Confidence ranges – German forensic directives

[EtOH] ≥ 1.0 g/l → ± 5% from the target value
 [EtOH] < 1.0 g/l → ± 0.05 g/l from the target value

References:

Bundesgesundheitsamt (1966) - Richtlinie für die Blutalkoholbestimmung für forensische Zwecke.
 DACH(23.04.2008) - Spezieller Leitfaden für die Blutalkoholbestimmung für forensische Zwecke – VA 0900-54 Version1

³ Confidence ranges – Directive of the German Medical Association

0.2 < [EtOH] ≤ 0.6 g/l → ± 15 % from the target value
 0.6 < [EtOH] ≤ 5.0 g/l → ± 9 % from the target value

References:

Richtlinien der Bundesärztekammer zur Qualitätssicherung laboratoriumsmedizinischer Untersuchungen (15.02.2008)

IVD 10 x 1,5 ml (liq.) **REF** WH20-015

EtOH Check WH 2,0 g/l

Ethanolkontrolle im Vollblut

Ethanol control in whole blood

Contrôle d'éthanol dans le sang total

Hersteller / Manufacturer

ACQ Science GmbH
 Etwiesenstraße 37
 72108 Rottenburg-Hailfingen
 Germany

Tel.: + 49 (0) 7457 94 69 3 0
 Fax: + 49 (0) 7457 94 69 3 69
 E-mail: info@acq-science.de

LOT 402101060/6

2018-10

8°C
 2°C



ACQ SCIENCE



ACQ Science GmbH

Etwiesenstraße 37, 72108 Rottenburg-Hailfingen Germany, Tel. +49 (0) 7457 946 93-0