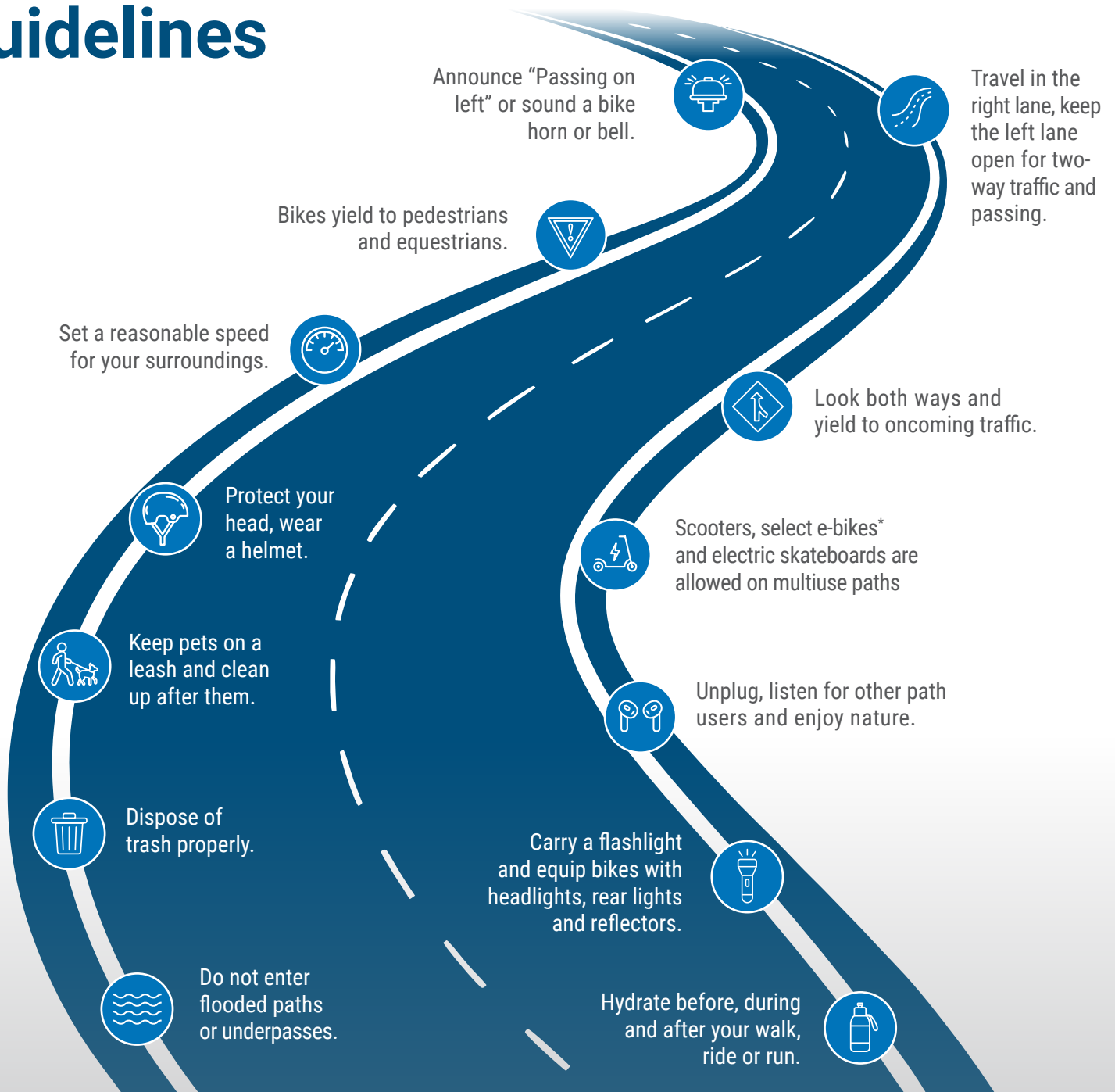


Multiuse Path Guidelines



*e-Bikes in Scottsdale

- ▶ Not all e-bikes are the same, maximum speed limits determine where it is safe and legal to ride an e-bike in Scottsdale.
- ▶ High-speed e-bikes, gas-powered bikes, motorcycles and ATV's are not allowed on paved paths.

	Manual Bike	e-bike 20 MPH Max Speed Limit Pedal Assist and Throttle Operation	e-bike 28 MPH Max Speed Limit Pedal Assist and Throttle Operation
City Sidewalks	✓	✓	✗
Multiuse Path System	✓	✓	✗
Unpaved Trail Network	✓	✗	✗
On-street Bike Lanes and Designated Routes	✓	✓	✓
McDowell Sonoran Preserve	✓	✗	✗