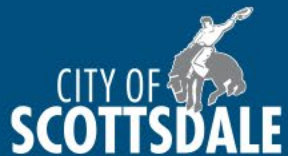


78th St. and Gold Dust Ave. Traffic Calming Improvements

Sam Taylor, PE

Principal Traffic Engineer

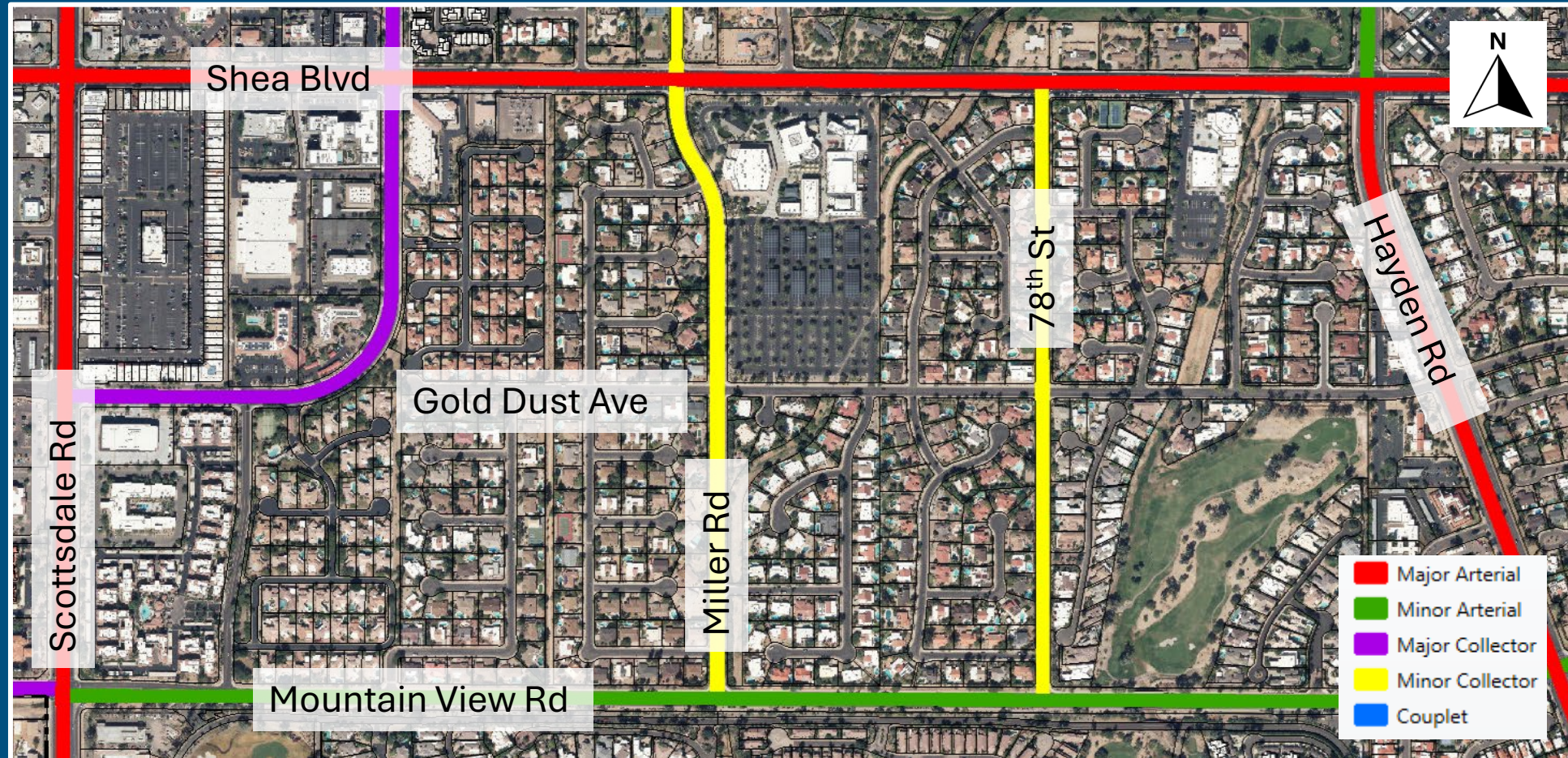


Background

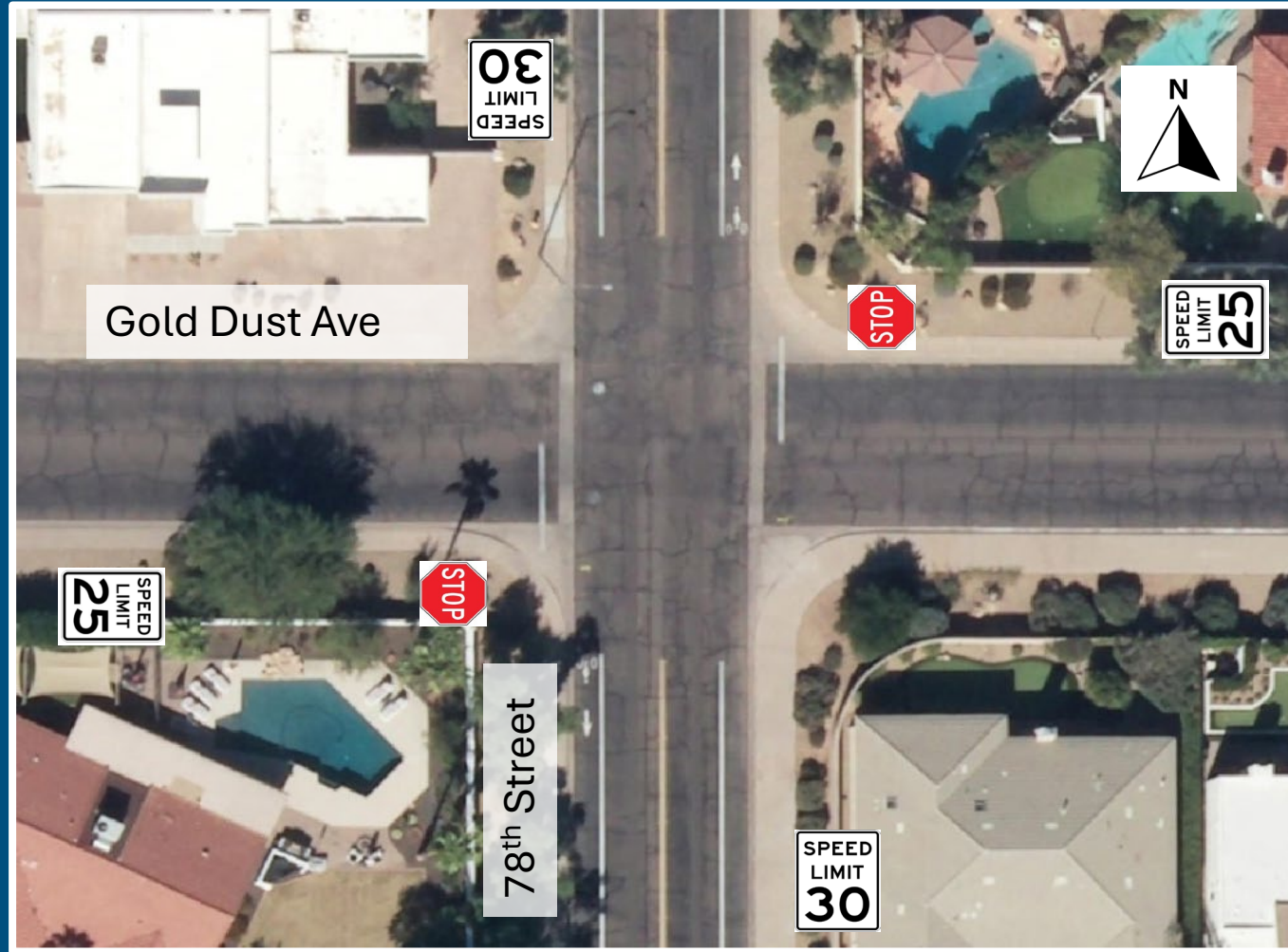
- Documented speeding and cut-through traffic on 78th St.
- Citizen concerns from LaCuesta neighborhood.
- Citizen petition submitted to council in January:
 1. All-way stop at 78th St. and Gold Dust Ave.
 2. 25 MPH speed limit on 78th St. between Mountain View Rd. and Shea Blvd.
 3. Roadway classification change from minor collector to local street.



Location Characteristics



Intersection Characteristics



Traffic Data Collection

Average Daily Traffic (ADT)

- 78th Street: 1,144 vehicles per day
- Gold Dust Ave.: 726 vehicles per day
- Data Collected 3/12/2024
- Observations have noted high pedestrian activity
- Collision data was reviewed for last 5 years: only 1 reported collision that occurred on Dec. 12, 2024.

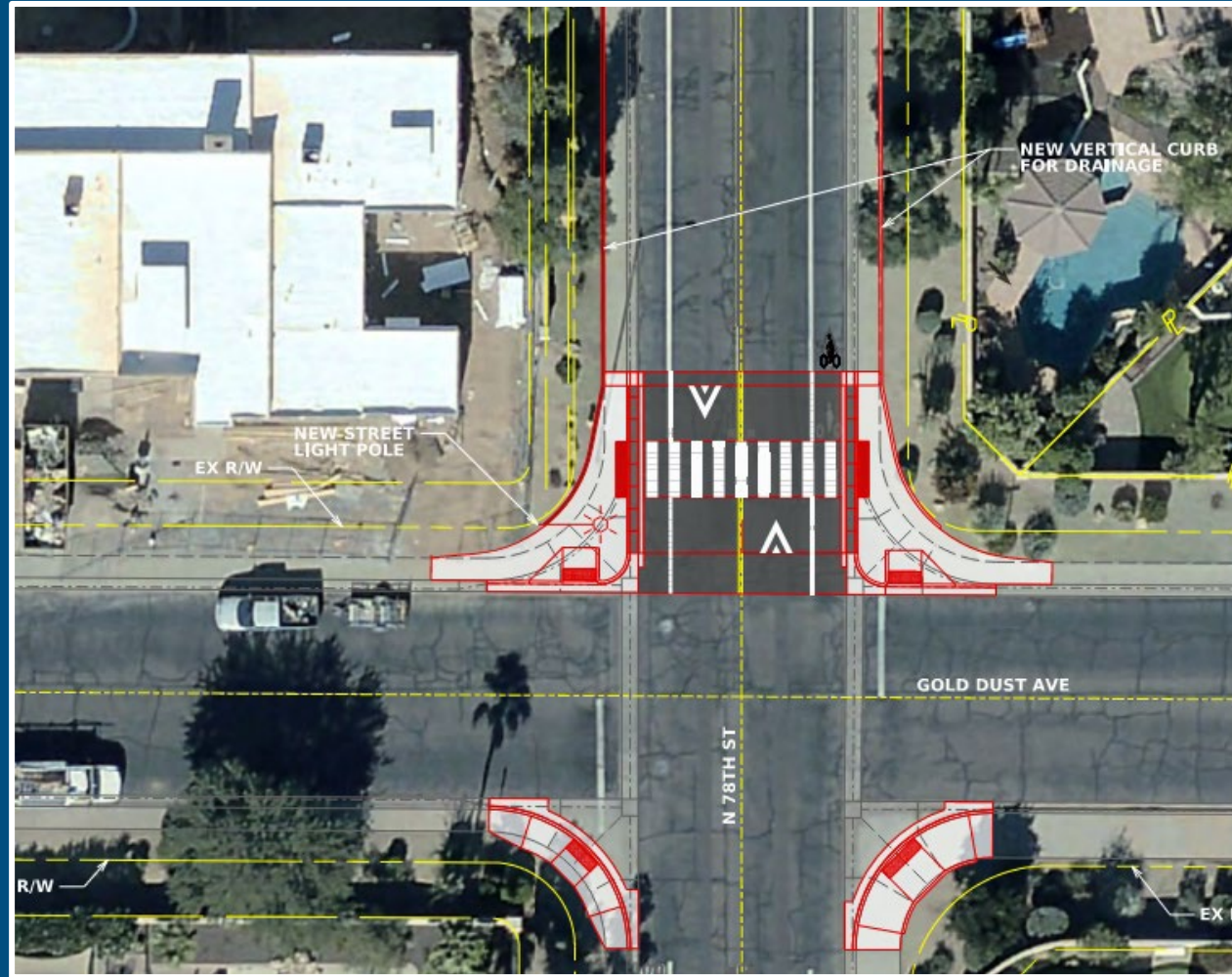
	Daily Traffic Volume	% of Vehicles 35mph or more	% of Vehicles 40 mph or more
NTMP Required	500 min, 3000 max	40%	20%
Measured	1144	81%	54%

NB only	Daily Traffic Volume	% of Vehicles 35mph or more	% of Vehicles 40 mph or more
NTMP Required	500 min, 3000 max	40%	20%
Measured	537	69%	35%

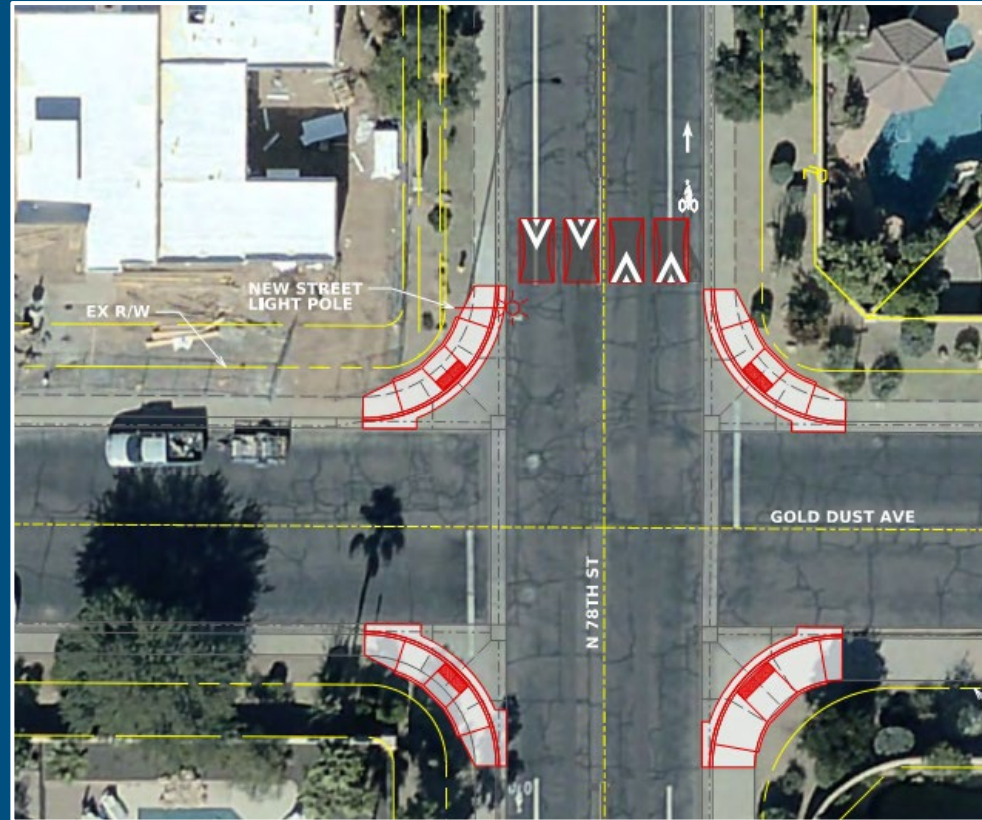
SB only	Daily Traffic Volume	% of Vehicles 35mph or more	% of Vehicles 40 mph or more
NTMP Required	500 min, 3000 max	40%	20%
Measured	607	92%	70%



Recommended Alternative: Raised Crosswalk

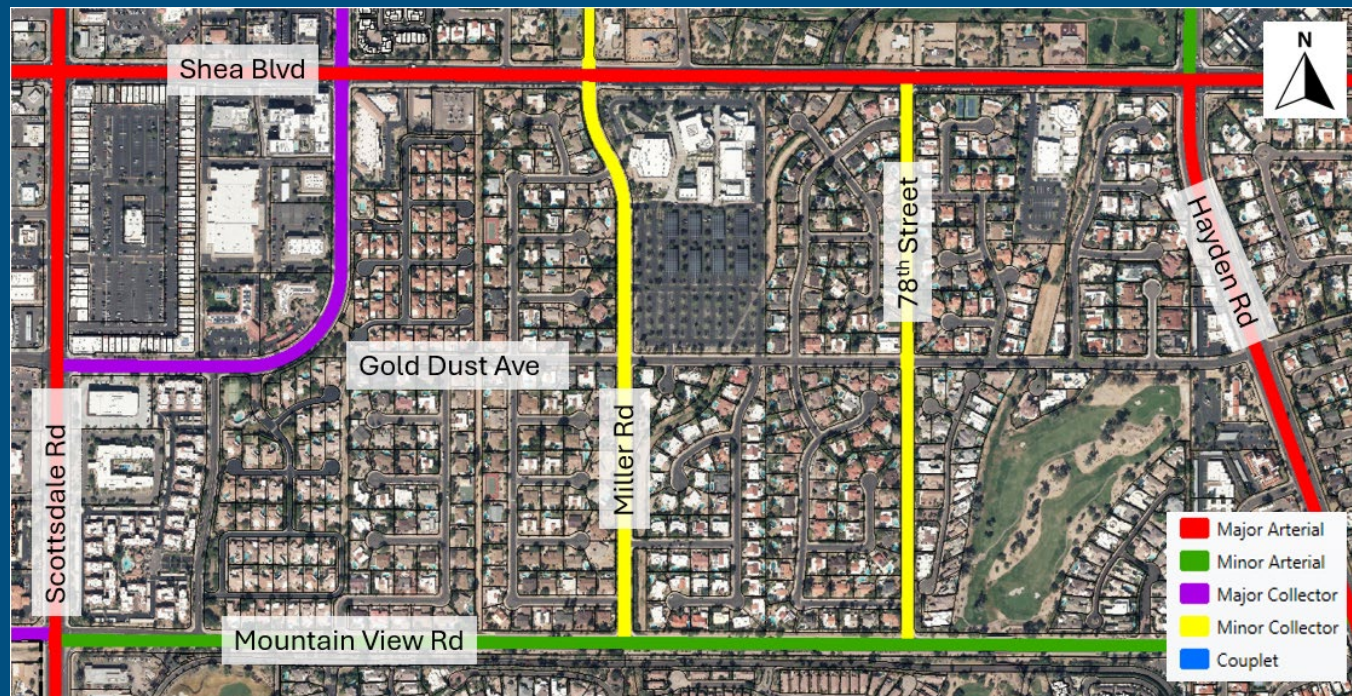


Alternate Measures



Reclassification and Speed Limit

- Reclassification and speed limit reduction may be considered in the future, if full traffic calming devices are implemented along the 78th Street corridor.



Next Steps

- Compile public feedback.
- Proceed to final design and construction of recommended alternative.
- Additional evaluation of the area after project construction.
- Please contact Sam Taylor at STaylor@ScottsdaleAZ.gov with project questions or to provide feedback.

